

# TA Programme Facilitation

## Cross Cutting Themes

10<sup>th</sup> March 2020

St Austell

# Sustainable Development

- *development* that meets the needs of the present, without compromising the ability of future generations to meet their own needs.
- economic development that is conducted without depletion of natural resources.



*Need to balance between the often competing needs/objectives project design, management, delivery and ongoing.....*

# Equality & Diversity

Together they consider the natural and human environments in an holistic manner



Really important - core/gateway criteria

# Local Priorities



Good & Best Practices

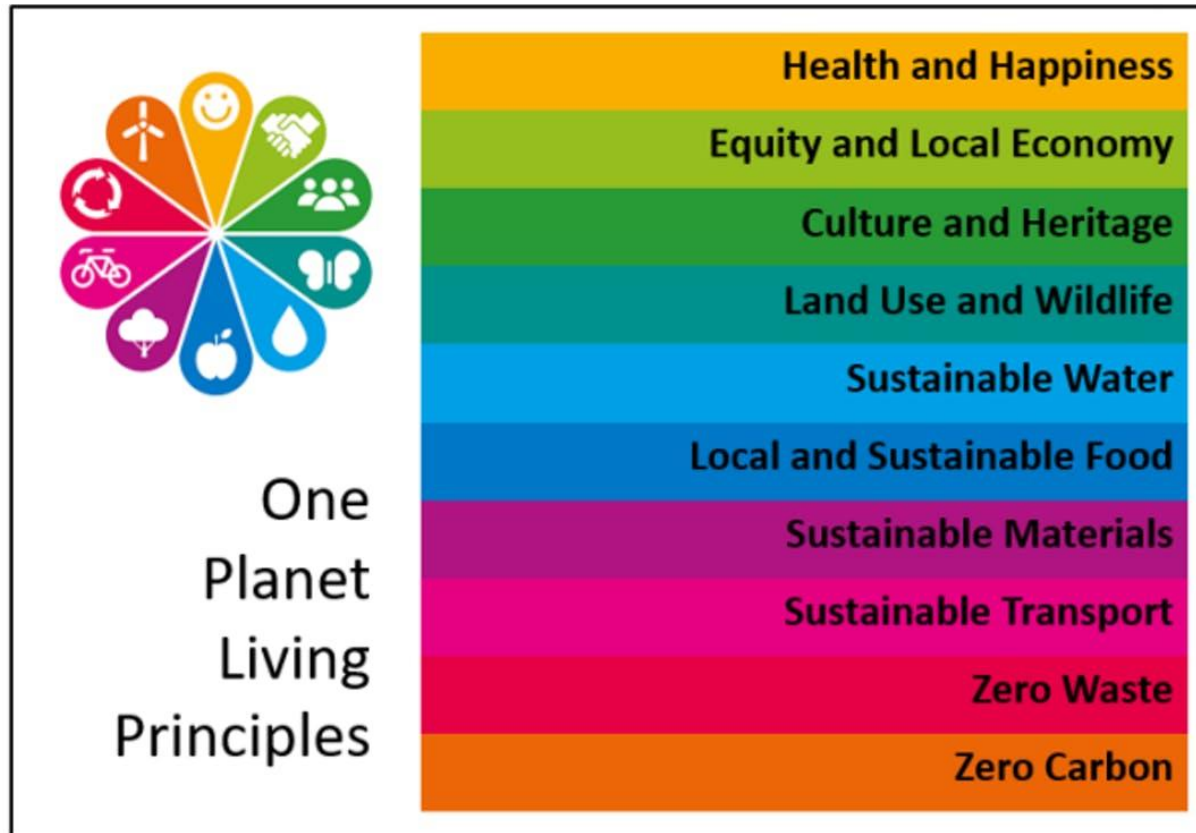
Legal compliance - starting point not finishing line!

# Environmental Sustainability



# Resource Efficiency

– doing more with less





# Capital Builds



# Post Construction Certification

## **BREEAM –**

Excellent new builds

Very Good refurbishments

## **CEEQUAL –**

Excellent WTA

## **SOCIAL SUSTAINABILITY TOOLKIT**



# BREEAM

- **Energy**
- **Health and Wellbeing**
- **Land Use**
- **Materials**
- **Management**
- **Pollution**
- **Transport**
- **Waste**
- **Water**
- **Innovation**

# CEEQUAL

- Project strategy
- Project management
- People & communities
- Land use & landscape
- Historic environment
- Ecology and biodiversity
- Water environment
- Physical resources – use and management
- Transport

# Climate Change



# Equality & Diversity

## Equal Opportunities and Non-discrimination theme

**Why such a focus?**

# Equal opportunities and non-discrimination

## The right thing to do

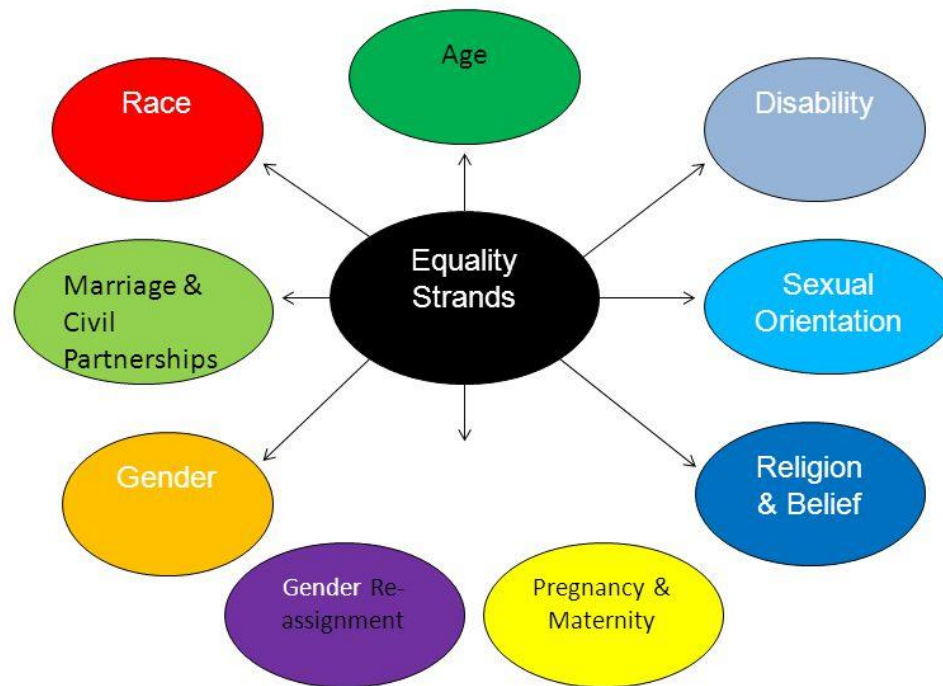
- total population of Cornwall iro 550,000
- 110,000 aged 65 and over
- 21% of the total population have a long-term limiting illness/disability
- More than twice the national average (National average 10%)
- More people in Cornwall with a limiting long-term condition or disability than there are people aged over 65.
- c.43.64% of the total figure of people in Cornwall with a long-term limiting health condition or disability are aged **under** 65.

*(Disability Cornwall, 2013)*

# Equality Act 2010

## 9 protected characteristics

### 9 Protected Characteristics





# The basics!

- Access to employment
- Skills development
- Good working practices such as:
  - Job share
  - Equal pay for equal work
- Alternative formats
- Accessible websites

# Accessible buildings & facilities



Twenty parking spaces in this parking lot were occupied with empty wheelchairs. They had signs like "I'll be quick", "Oops!", "Nobody is using it" and "I'm waiting for somebody".



# Compliance

- 3 stages
- Grant Funding Agreements/Contract
- Legislative

# What good practice looks like?

- Legal baselines starting point – not the finishing line
- Treat everyone according to their needs
- Fully inclusive projects
- Fully accessible buildings

# What good practice looks like?

- Adequately consider environmental impacts
- Climate change
- WRAP & the circular economy
- Environmental growth

# Compliance





# Compliance

- Application & GFA
- Policies
- Implementation plans



Sue Patton

Programme Facilitation Manager

[sue.patton@cornwaldevelopmentcompnay.co.uk](mailto:sue.patton@cornwaldevelopmentcompnay.co.uk)