



# CORNWALL AND ISLES OF SCILLY GROWTH PROGRAMME 2014-2020

Projects and Beneficiaries

OCTOBER 2021



HM Government



**European Union**  
European Structural  
and Investment Funds



CORNWALL &  
ISLES OF SCILLY  
GROWTH  
PROGRAMME



**CORNWALL  
COUNCIL**  
one and all • onen hag oll

## WHAT IS THE GROWTH PROGRAMME?

The Cornwall and Isles of Scilly Growth Programme is the European economic regeneration programme for the region. Running from 2014-2020 it contributes to the EU ambition to deliver smart, sustainable and inclusive growth.

Over a hundred projects have received funding through the programme and many are delivering until 2023.

## INVESTMENT TO DATE

**Total number of projects: 172**

**Total EU investment: £515m**

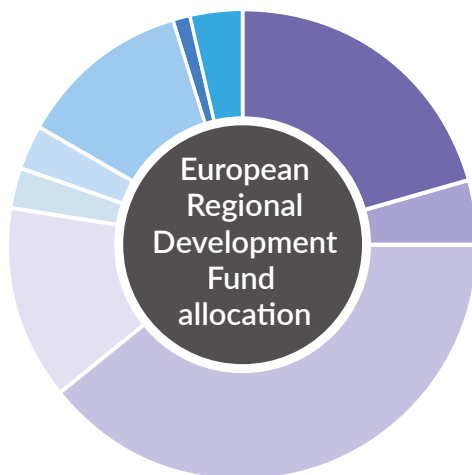
**Number of ERDF projects: 106**

**Total ERDF investment: £379m**

**Number of ESF projects: 66**

**Total EU investment: £136m**

## FUNDING ALLOCATION



- Research and Innovation €91m
- Information and Communications Technology €19m
- Business Competitiveness €172m
- Low Carbon Economy €76m
- Climate Change Adaptation €12m
- Preserving the Environment and Resource Efficiency €13m
- Sustainable Transport €58m
- Community Led Local Development €11m
- Local Economic Covid-19 Recovery Action Plans €0.6m



- Access to Employment for Job-seekers and Inactive People €27m
- Access to Employment for Young People €12m
- Active Inclusion €48m
- Community Led Local Development €7m
- Enhancing Equal Access to Lifelong Learning €30m
- Education and Training Systems to Improve the Labour Market €28m

## Aerospace Cornwall 2



The second phase of the Aerospace Cornwall project continues to deliver a comprehensive programme of research, development and innovation support to businesses in Cornwall and the Isles of Scilly which are developing products, services and technologies that could add value to the aerospace/space sectors.

[www.aerospacecornwall.co.uk](http://www.aerospacecornwall.co.uk)



ERDF: £3,402,543

Cornwall & Isles of Scilly

End date: Dec 2022

## Agri-tech Cornwall



Research, development and innovation in the agri-tech sector. Supported businesses to drive growth, productivity and to exploit new market opportunities.

[www.agritechcornwall.co.uk](http://www.agritechcornwall.co.uk)

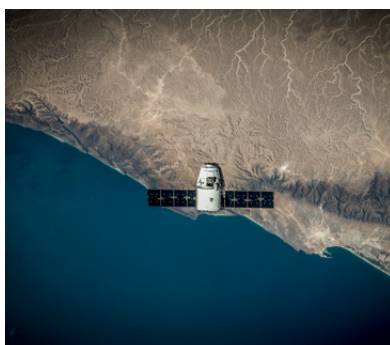


ERDF: £8,924,214

Cornwall & Isles of Scilly

End date: Dec 2021

## Centre for Space Technologies



Spaceport Cornwall will be the first horizontal satellite launch location in Western Europe, creating - for the first time - a UK launch capability by 2022. Amongst many other important attributes, the Spaceport Cornwall project will create opportunities for Cornwall to capture new technology-based markets, using the magnet of a UK launch facility to attract technology developers.

ERDF: £2,799,071

Newquay

End date: Mar 2023

## Cornwall & Isles of Scilly Marine Hydrogen-Electric Propulsion Centre of Excellence



Led by Pure Energy Professional Ltd, this project focuses on research and development into the potential use of hydrogen in marine propulsion systems.

[www.cornwallmarinehydrogencentre.com](http://www.cornwallmarinehydrogencentre.com)

ERDF: £624,000

Falmouth

End date: Sep 2022

## Deep Digital Cornwall



Deep Digital Cornwall is giving businesses access to research skills, knowledge, data and facilities to carry out digital research and development of innovative products and services in sectors related to the underground environment and its connections to the surface. The project is creating a new 'Deep Digital Cornwall' Hub on the Penryn university campus. [www.deepdigitalcornwall.org](http://www.deepdigitalcornwall.org)



ERDF: £3,313,761

Cornwall & Isles of Scilly

End date: Jul 2023

## Energy Independent Farming



The Energy Independent Farming project, delivered by Bennamann Ltd in collaboration with the University of Exeter, aims to deliver commercially viable high value energy products in biogas and liquid biofuel and reduce the level of artificial inputs such as fertiliser required on farm.

[www.bennamann.com/energy-independent-farming](http://www.bennamann.com/energy-independent-farming)

ERDF: £977,376

Cornwall & Isles of Scilly

End date: Oct 2022

## EPIC2 (E-Health Productivity & Innovation in Cornwall)



Digital health (e-health and e-wellbeing) is seen as an emerging sector in Cornwall and the Isles of Scilly, with considerable potential for growth. Following the first EPIC project, EPIC 2 continues to develop a sustainable and growing digital health market with new high-value jobs, products and services. The project is led by the University of Plymouth and delivered with partner organisations.

[www.plymouth.ac.uk/research/epic](http://www.plymouth.ac.uk/research/epic)

# EPIC

ERDF: £3,315,988

Cornwall & Isles of Scilly

End date: Apr 2023

## Launchpad



Launchpad, a graduate start-up programme run by Falmouth University, gives participants the skills to develop a project from inception to sustainable, high growth potential company in just two years. Graduates develop products and processes in response to market demand, focusing on the digital games and interactive technology sectors.

[www.falmouthlaunchpad.co.uk](http://www.falmouthlaunchpad.co.uk)



ERDF: £14,434,029

Cornwall & Isles of Scilly

End date: Dec 2022



## RESEARCH AND INNOVATION

### Marine-i 2



Building on the first Marine-i project Marine-i 2 continues to support innovation in the marine sector across four themes: marine energy, marine manufacturing, maritime operations and marine environmental technologies. The project delivers funding, links to investment and wider business support.

[www.marine-i.co.uk](http://www.marine-i.co.uk)



ERDF: £4,146,161

Cornwall & Isles of Scilly

End date: Dec 2022

### Smartline Extension



Smartline is a ground breaking research project looking at how technology can help us live healthier and happier lives. This extension will allow Smartline to continue to deliver its existing business engagement programmes and provide additional support on scaling up and addressing national market opportunities.

[www.smartline.org.uk](http://www.smartline.org.uk)



ERDF: £3,150,436

Cornwall & Isles of Scilly

End date: Jan 2023

### The Inclusivity Project



The Inclusivity Project seeks to understand and address the opportunities and challenges faced by small and medium sized businesses in relation to inclusive growth, specifically relating to older workers and those with disability or long term chronic health conditions.

[www.theinclusivityproject.co.uk](http://www.theinclusivityproject.co.uk)



ERDF: £1,941,038

Cornwall & Isles of Scilly

End date: Mar 2022

## RESEARCH AND INNOVATION - DELIVERED

### AeroSpace Cornwall (phase 1)

Aimed to increase the supply chain cluster in the Space and Aerospace sectors, create highly skilled jobs and launch new products to the market place. Followed by Phase 2. **ERDF £2,902,350 | Cornwall & Isles of Scilly**



## Debit escrows and smart contracts in FinTech

Innovation in consumer-facing financial technologies (FinTech) to better facilitate digital payments.

**ERDF: £509,025 | South East Cornwall**

## Diagnosticap

Commercialisation of Diagnosticap, a new early stage urine test, developed and patented by Thalamus Health Ltd, which makes point-of-care diagnostics more accurate, efficient and hygienic.

**ERDF: £1,044,232 | Cornwall & Isles of Scilly**

## EPIC (E-Health Productivity & Innovation in Cornwall)

Aimed to develop a sustainable and growing digital health market with new high-value jobs, products and services. Followed by EPIC 2. **ERDF: £2,615,932 | Cornwall & Isles of Scilly**

## Marine-i

Supported innovation in the marine sector across four themes: marine energy, marine manufacturing, maritime operations and marine environmental technologies. Followed by Marine-i 2.

**ERDF: £6,139,082 | Cornwall & Isles of Scilly**

## Smartline

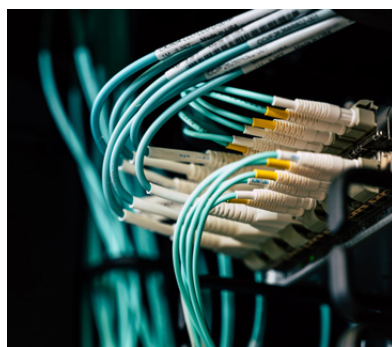
Analysed data from participating homes in Cornwall to help identify the requirements and market potential for new eHealth / eWellbeing products and services. Followed by Smartline Extension.

**ERDF: £3,780,374 | Cornwall & Isles of Scilly**

## DIGITAL CONNECTIVITY



### Superfast 3 – Inclusive Growth



The Superfast 3 project will extend access to superfast (30+Mbps) and ultrafast (100+Mbps) broadband to over 500 businesses in Cornwall and the Isles of Scilly, focusing on areas with broadband speeds of less than 15mbps, areas where not all premises can currently access superfast broadband and the most deprived areas. **[www.superfastcornwall.org](http://www.superfastcornwall.org)**



**ERDF: £2,882,812**

**Cornwall & Isles of Scilly**

**End date: Jul 2023**



## Superfast Satellite Terminals

---

Delivered satellite broadband access to small and medium sized enterprises in rural and remote areas where there was no access to connection speeds of at least 2Mbps. **ERDF: £850,083 | Cornwall & Isles of Scilly**

## Superfast 2

---

Further extended the superfast and ultrafast broadband networks to drive increased connectivity and help overcome peripherality from markets. **ERDF: £8,995,136 | Cornwall & Isles of Scilly**

## Superfast Business Cornwall

---

Enabled businesses to better understand and exploit the opportunities offered by superfast broadband. **ERDF: £3,044,873 | Cornwall & Isles of Scilly**

## Acceleration Through Innovation 2 (ATI2)



Building on the first ATI project, ATI2 continues to deliver high value, high impact interventions by providing acceleration support to innovative SMEs with the potential to commercially exploit new ideas and technology to develop their business. The project is led by the University of Plymouth.

[www.aticornwallinnovation.co.uk](http://www.aticornwallinnovation.co.uk)



ERDF: £2,729,139

Cornwall & Isles of Scilly

End date: Mar 2023

## Access to Finance



Oxford Innovation's Access to Finance project is aimed at small and medium sized enterprises in Cornwall and the Isles of Scilly that need support to secure finance. Businesses can attend workshops on how to make appropriate financial choices, receive one to one support and benefit from the development of a financial support network.

[www.a2fcornwall.co.uk](http://www.a2fcornwall.co.uk)



ERDF: £6,567,101

Cornwall & Isles of Scilly

End date: Dec 2022

## BIG Productivity



Following the successful BIG2 project, BIG Productivity is a grant fund that is helping businesses in Cornwall boost their productivity and grow. It co-invests with businesses and can offer grants of £2,500 to £150,000 to qualifying businesses.

[www.businessinvestmentforgrowth.co.uk](http://www.businessinvestmentforgrowth.co.uk)



ERDF: £4,100,485

Cornwall & Isles of Scilly

End date: Jul 2022

## Breakthrough 2



Building on the first Breakthrough project, Breakthrough 2 supports businesses to realise their growth potential and increase productivity. Small businesses receive support to understand productivity, which is a key means of improving competitive advantage and generating growth.

[www.unlocking-potential.co.uk/breakthrough](http://www.unlocking-potential.co.uk/breakthrough)



Breakthrough<sup>IP</sup>



InFocus<sup>IP</sup>

ERDF: £3,025,000

Cornwall & Isles of Scilly

End date: Jan 2022



## Cornwall & Isles of Scilly Export Trade Forum



This project is working to boost Cornwall and the Isles of Scilly's capacity to trade internationally by enabling small and medium sized businesses to confidently and competently target and connect with prospective buyers in international markets.

[www.businesswest.co.uk/export/export-trade-forum](http://www.businesswest.co.uk/export/export-trade-forum)

ERDF: £2,100,000

Cornwall & Isles of Scilly

End date: Jun 2023

## Cornwall and Isles of Scilly Growth Hub (Phase 2)



The Growth Hub provides a single point for accessing an extensive range of information and support to help start or grow a business. Phase 2 continues the development of the Growth Hub and its activity in conjunction with the Cornwall and Isles of Scilly Skills Hub.

[www.ciosgrowthhub.com](http://www.ciosgrowthhub.com)



ERDF: £2,535,200

Cornwall & Isles of Scilly

End date: Mar 2023

## Cornwall & Isles of Scilly Manufacturing Advisory Programme



This programme supports the productivity and growth of small and medium sized manufacturing businesses by offering hands-on specialist manufacturing advice and support. This is delivered 'in the field' by a local specialist with an understanding of the area's manufacturing demographic and existing support programmes. [swmas.co.uk/fully-funded-expert-advice-hands-support-and-grants](http://swmas.co.uk/fully-funded-expert-advice-hands-support-and-grants)



ERDF: £501,048

Cornwall & Isles of Scilly

End date: Jun 2023

## Cornwall and Isles of Scilly Investment Fund (CIoSIF)



CIoSIF is an investment fund aimed at boosting the local economy by providing debt and equity finance to help growing small businesses across the region. It provides debt and equity finance from £25,000 to £2 million and is expected to unlock a further £40 million of private investment.

[www.ciosif.co.uk](http://www.ciosif.co.uk)



ERDF: £16,000,000

Cornwall & Isles of Scilly

End date: Dec 2022



## Creative Growth Programme



Led by Council of the Isles of Scilly, the Adaptive Scilly project focuses on adapting the islands to the threats of existing and future flooding and erosion to its community, wildlife, economy, and scarce water supply. The programme of environmentally sensitive improvements, designed to reduce floods and coastal erosion, will increase community resilience to the impacts of climate change. [www.creativeengland.co.uk](http://www.creativeengland.co.uk)

ERDF: £459,243

Cornwall & Isles of Scilly

End date: Jun 2023

## Cultivator Business Support 2



Cultivator provides tailored support to the Creative Industries. Working alongside the Cornwall and Isles of Scilly Growth Hub and generic business support it delivers bespoke and highly specialist coaching, mentoring and targeted investment. This project is directly aligned to the ESF Cultivator Skills project to provide an integrated programme of support. [www.cultivatorcornwall.org.uk](http://www.cultivatorcornwall.org.uk)



ERDF: £2,486,093

Cornwall & Isles of Scilly

End date: Sep 2022

## Digital Transformation



Digital Transformation has been developed by local businesses for local businesses. Delivered by Cornwall College and Software Cornwall the project will provide business support to SMEs, aiming to increase productivity and competitiveness.

[www.digital-cornwall.co.uk](http://www.digital-cornwall.co.uk)

**DIGITAL**  
transformation

ERDF: £2,173,094

Cornwall & Isles of Scilly

End date: Jun 2023

## Future Focus 2



Building on the first Future Focus project, Future Focus 2 provides focussed support for small and medium sized enterprises, helping them realise their growth potential through innovation.

[www.unlocking-potential.co.uk/futurefocus](http://www.unlocking-potential.co.uk/futurefocus)



ERDF: £2,007,539

Cornwall & Isles of Scilly

End date: Mar 2023

## Immersive Business



Immersive Business is establishing a new and unique immersive technology facility, designed to enable small and medium sized enterprises in Cornwall and the Isles of Scilly to access and benefit from virtual reality, augmented reality and mixed reality technologies. The project is led by Falmouth University in collaboration with University of Exeter.

[www.falmouth.ac.uk/working-with-industry](http://www.falmouth.ac.uk/working-with-industry)



ERDF: £1,697,401

Cornwall & Isles of Scilly

End date: Mar 2023

## Invest in Cornwall 2



Led by Cornwall Development Company, the second phase of this project also known as Cornwall Trade and Investment, continues to provide export trade development opportunities for small and medium sized businesses and to promote Cornwall and the Isles of Scilly for foreign direct investment.

[www.cornwallti.com](http://www.cornwallti.com)



ERDF: £2,060,000

Cornwall & Isles of Scilly

End date: Jun 2023

## Isles of Scilly Voucher Scheme Extension



This project extends the Isles of Scilly Voucher Scheme in continuing to make investments of £1,000 to £100,000 in small and medium sized enterprises on the islands. It aims to generate long term, sustainable business growth.

[www.iosvoucherscheme.co.uk](http://www.iosvoucherscheme.co.uk)



ERDF: £1,327,226

Isles of Scilly

End date: Dec 2021

## Launchpad Outreach Project



Building on the success of Launchpad, which aims to create new innovative businesses, Launchpad Outreach takes the same business development skills into the business community. Via support and market research from the team, and access to the resources of the University, Launchpad Outreach helps existing businesses identify new market opportunities and develop new products and services. [www.launchpadoutreach.com](http://www.launchpadoutreach.com)



ERDF: £792,843

Cornwall & Isles of Scilly

End date: May 2023

## Outset Cornwall 4



Outset Cornwall 4 provides a specialist enterprise support service for pre-start individuals and some new businesses (up to 36 months trading). It builds on the previous Outset project and is led by YTKO Ltd and delivered in partnership with CN4C.

[www.outset.org/cornwall](http://www.outset.org/cornwall)



ERDF: £3,162,193

Cornwall & Isles of Scilly

End date: Aug 2022

## Transform 2



Also known as Oxford Innovation Cornwall, this project supports businesses with significant growth potential through intensive 1-1 business coaching to develop and implement a high growth plan. It also provides productivity support to steady state, well-resourced businesses.

[www.oxfordinnovationcornwall.co.uk](http://www.oxfordinnovationcornwall.co.uk)



ERDF: £5,378,260

Cornwall & Isles of Scilly

End date: Dec 2022

## BUSINESS SUPPORT - DELIVERED

### Acceleration Through Innovation (ATI)

Provided innovation coaching and funding to develop an innovation culture in small and medium sized enterprises. Followed by ATI 2. **ERDF: £2,344,167 | Cornwall & Isles of Scilly**

### Breakthrough

Provided bespoke support for start-ups. Followed by Breakthrough 2. **ERDF: £3,806,864 | Cornwall & Isles of Scilly**

### Business Investment for Growth 2

Co-investment scheme for innovative businesses which helped to improve their products, processes, services and create jobs. **ERDF: £4,218,157 | Cornwall & Isles of Scilly**



## Cornish High Value Manufacturing Investment Programme

---

Delivered by SWMAS Ltd, supported innovative companies to help them grow and develop and launch new products.

**ERDF: £722,053 | Cornwall & Isles of Scilly**

## Cornwall and Isles of Scilly Growth Hub (phase 1)

---

Central point for advice about business support. Followed by phase 2.

**ERDF: £1,804,267 | Cornwall & Isles of Scilly**

## Coaching for Growth

---

Known as Transform, the project run by Oxford Innovation provided focussed support for businesses with high growth potential. **ERDF: £6,981,217 | Cornwall & Isles of Scilly**

## Cultivator (phase 1)

---

Supported skills and business development for businesses in the creative industries.

**ERDF: £1,939,462 | ESF: £998,975 | Cornwall & Isles of Scilly**

## Export for Growth

---

Focused on enhancing businesses' international trade performance.

**ERDF: £2,400,000 | Cornwall & Isles of Scilly**

## Future Focus

---

Helped businesses to grow through innovation. Followed by Future Focus 2.

**ERDF: £3,651,345 | Cornwall & Isles of Scilly**

## Invest in Cornwall

---

Promoted positive perceptions of Cornwall and the Isles of Scilly as a place to do business. Followed by Cornwall Trade & Investment 2. **ERDF: £1,656,252 | Cornwall & Isles of Scilly**

## Isles of Scilly Voucher Scheme

---

Made investments of £1,000 - £100,000 in small and medium sized enterprises on the islands. Followed by an extension project. **ERDF: £1,368,652 | Isles of Scilly**



### Kickstart Grants

---

Part of the Government's response to Covid-19 these grants supported businesses in the tourism sector and the wider economy. **ERDF: £1,568,902 | Cornwall & the Isles of Scilly**

### Local Manufacturing Advisory Programme

---

Delivered by SWMAS Ltd, supported established manufacturers to improve their productivity and grow. **ERDF: £124,932 | Cornwall & Isles of Scilly**

### Outset Cornwall

---

Tailored support for people who wanted to start their own business. Followed by Outset 4. **ERDF: £3,064,907 | Cornwall & Isles of Scilly**

### Propel

---

Provided support to help local marine businesses increase their competitiveness through innovation and collaboration. **ERDF: £605,664 | Cornwall & Isles of Scilly**

### Re opening High Streets Safely

---

Supported the re-opening of high streets in summer 2020 following the first Covid-19 lockdown. **ERDF: £539,639 | Cornwall & Isles of Scilly**



## Falmouth Wharves - Marine Hub



By refurbishing existing buildings at Falmouth Wharves, the project is creating workspace on the Falmouth and Penryn River, where marine orientated and/or enabling companies can do business and grow their operations.

ERDF: £2,928,247

Falmouth

End date: Jun 2022

## Hayle Marine Renewables Business Park (MRBP) Phase 2



Building on the success of Hayle Marine Renewable Business Park (HMRBP) Phase 1, this project is creating further high quality new build and re-furbished workspace adjacent to Hayle MRBP Phase 1. The buildings have been designed to be flexible so additional mezzanine space can be added at a later date.

ERDF: £3,289,186

Hayle

End date: Jul 2023

## Liskeard Cattle Market Digital & Creative Workspace



This project is creating 1,300m<sup>2</sup> of high quality office and workshop space for micro, small and medium sized businesses on the site of Liskeard Cattle Market.

ERDF: £2,264,573

Liskeard

End date: Jul 2023

[www.cornwall.gov.uk/liskeardcattlemarket](http://www.cornwall.gov.uk/liskeardcattlemarket)

## Penzance Creative Cluster



The Penzance Creative Cluster project is constructing high-quality workspace for businesses in the creative sector. Located at Causewayhead in Penzance, it will provide more than 1,500m<sup>2</sup> of studio units and tenancies for a range of creative businesses. [cornwallislesofscillygrowthprogramme.org.uk/projects/penzance-creative-cluster/](https://cornwallislesofscillygrowthprogramme.org.uk/projects/penzance-creative-cluster/)

ERDF: £3,165,691

Penzance

End date: Jul 2023

## The Innovation Studio



This project is delivering a new, high quality workspace in the town of Porthleven, comprising both a co-working hub and traditional leased office facilities.

ERDF: £731,250

Porthleven

End date: Jun 2023

## A30 Business Park Phase 1



Construction of high quality workspace on a site next to Indian Queens Industrial Estate, close to the A30.

[www.a30businesspark.co.uk](http://www.a30businesspark.co.uk)

Indian Queens

ERDF: £2,688,768

## Aerohub Business Park Phase 1



Office and light industrial space at Plot 2, Aerohub Business Park near Cornwall Airport Newquay.

[www.choosecornwall.co.uk/property/aerohub/](http://www.choosecornwall.co.uk/property/aerohub/)

Newquay

ERDF £4,385,818

## Church View Business Park



A range of high quality, flexible units in Falmouth to meet demand from businesses seeking to expand.

Falmouth

ERDF £3,562,083





## Cockwells Site Development



Bespoke workspace for Cockwells Modern & Classic Boatbuilding Ltd in Mylor, one of Cornwall's leading specialist marine manufacturers, providing a platform for innovation and long-term growth.

[www.cockwells.co.uk](http://www.cockwells.co.uk)

Mylor

ERDF: £491,825

## Carluddon Technology Park (ESAM)



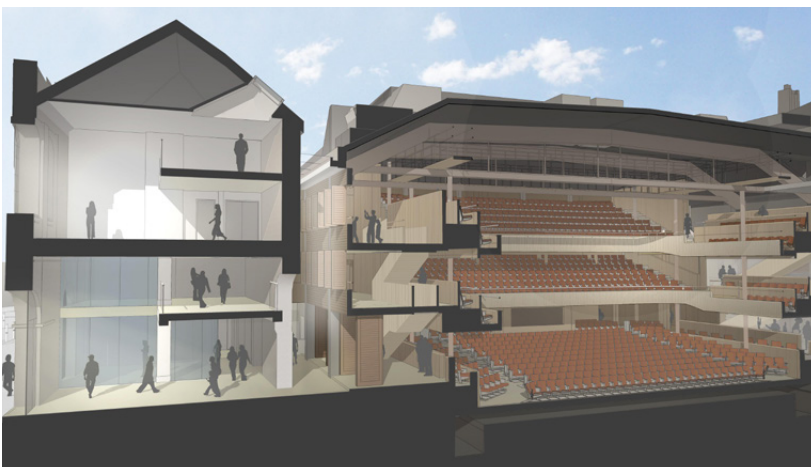
The Carluddon Technology Park Project also known as the Enterprise Space for Advanced Manufacturing (ESAM) is a workspace for advanced manufacturing and environmental businesses, located near St Austell.

[www.choosecornwall.co.uk/property/esam/](http://www.choosecornwall.co.uk/property/esam/)

St Austell

ERDF: £6,237,825

## Hall for Cornwall



A creative hub at Hall For Cornwall, known as Husa, providing office and meeting space for businesses in the creative sector.

[www.hallforcornwall.co.uk/husa](http://www.hallforcornwall.co.uk/husa)

Truro

ERDF: £2,090,864

## Krowji Phase 2



New workspace at Krowji, Redruth, Cornwall's largest creative cluster. The new building provides 20 studios, adding space for around 40 people to Krowji's current community of two hundred.

[www.krowji.org.uk](http://www.krowji.org.uk)

Redruth

ERDF £1,439,718

## Pool Innovation Centre - Grow-On Space (Chi Tevyans)



Chi Tevyans "House of Growth", is located opposite the original Pool Innovation Centre (PIC) and offers 12 high quality office suites for growing or relocating small and medium sized businesses.

[www.choosecornwall.co.uk/property/chi-tevyans](http://www.choosecornwall.co.uk/property/chi-tevyans)

Pool

ERDF: £2,376,080

## Redruth House & Enterprise Park



Fourteen high quality employment units for small and medium sized enterprises at Cornwall Business Park West in Scorrier.

[www.redruthhouse.com](http://www.redruthhouse.com)

Redruth

ERDF £3,472,926





## Cornwall FLOW Accelerator



Floating offshore wind (FLOW) has the potential to deliver 10GW of Britain's target of 50GW of offshore wind capacity by 2050. FLOW combines floating foundations with the world's largest offshore wind turbine sizes, with existing fixed bottom offshore wind experience and capability.

ERDF: £4,837,623

Hayle

End date: Jun 2023

## Eden Geothermal Project



This project aims to drill and test the first 4,500m deep demonstration well for a geothermal energy system, at the Eden Project in mid-Cornwall, followed by one year of heat production to demonstrate greenhouse gas (GHG) savings.



ERDF: £13,667,000

St Austell

End date: Mar 2023

[www.edengeothermal.com](http://www.edengeothermal.com)

## Heat the Streets



Heat the Street delivers a low carbon, village-wide heating system using sea water as the heat source. This system will provide significantly lower heating costs and carbon emissions than present systems such as oil boilers and night storage heaters.

ERDF: £6,246,859

Stithians

End date: Jun 2023

[www.kensautilities.com/heat-the-streets-cornwall](http://www.kensautilities.com/heat-the-streets-cornwall)

## Off-Grid Rural EV Charger with Bioheat



This project focuses on research, development and demonstration of technologies that will enable biomethane from farm slurry and other organic waste to be stored and used to deliver electric vehicle (EV) charging in rural locations without access to the grid and EV charging in combination with bioheat for space/water heating and cooking in off-gas-grid domestic dwellings. [bannamannenergy.com/ev-charger-project/](http://bannamannenergy.com/ev-charger-project/)

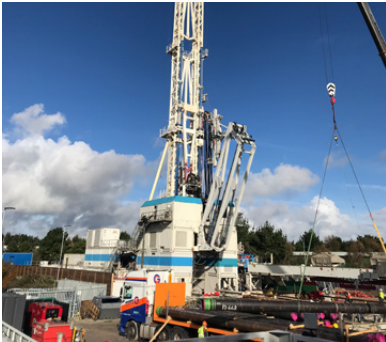
ERDF: £686,575

Cornwall & Isles of Scilly

End date: Jun 2023



## United Downs Geothermal Project



This project is creating a demonstrator deep geothermal power plant at United Downs to prove the commercial viability of the technology and act as a catalyst for further investment. Two deep geothermal wells have been drilled to drive a pilot power plant on the site, showing that renewable electricity can be generated from Cornwall's resources.

[www.uniteddownsgeothermal.co.uk](http://www.uniteddownsgeothermal.co.uk)



**ERDF: £16,500,000**

**United Downs**

**End date: Dec 2021**

# LOW CARBON ECONOMY - DELIVERED



## CETO Wave Energy

A wave energy technology developer and local research institutions working together to build expertise in the wave energy sector. **ERDF: £312,934 | Hayle**

## Cornwall and Isles of Scilly Local Energy Market

Constraints on the electricity grid are affecting the UK as it pursues its renewable energy and carbon targets. This project created the UK's first local marketplace platform to provide energy more flexibly, in line with demand.

**ERDF: £11,546,675 | Cornwall & Isles of Scilly**

## Cornwall New Energy

Developed the local energy market to ensure enterprises and communities can benefit from more local ownership and operation of energy generation and supply. **ERDF: £2,128,195 | Cornwall**

## Jubilee Pool Geothermal Heat Project

Drilled a geothermal well and heated a section of Jubilee Pool, Penzance's art deco lido, with renewable geothermal energy. **ERDF: £1,824,735 | Penzance**

## Smart Energy Islands

Tackled some of the Isles of Scilly's infrastructure and utilities issues, whilst providing a model for how other communities can profit from rapid transition to low carbon consumption. **ERDF: £8,637,179 | Isles of Scilly**

## Wave Hub Offshore Cable Extensions

Installation of subsea power cable extensions at the Wave Hub to enable testing of renewable energy devices and electricity generation at the Wave Hub. **ERDF: £2,130,802 | Hayle & Falmouth**



## Climate Adaptation Scilly



Led by Council of the Isles of Scilly, the Climate Adaptation Scilly project focuses on adapting the islands to the threats of existing and future flooding and erosion to its community, wildlife, economy, and scarce water supply. The programme of environmentally sensitive improvements, designed to reduce floods and coastal erosion, will increase community resilience to the impacts of climate change.

<https://scilly.gov.uk/environment-transport/climate-adaptation-scilly>

ERDF: £2,196,787

Isles of Scilly

End date: Jun 2023

## Long Rock Strategic Coastal Improvements



This project will have long term economic and environmental benefits protecting land, properties and commercial sites. It has upgraded the most vulnerable sections of the Mount's Bay coastal frontage which are susceptible to overtopping. It is also enhancing Marazion Marsh. The work protects infrastructure including the railway and A30.

[www.cornwall.gov.uk/environment/countryside/flood-risk/flood-risk-management-projects/long-rock-coastal-improvements-project/](http://www.cornwall.gov.uk/environment/countryside/flood-risk/flood-risk-management-projects/long-rock-coastal-improvements-project/)



ERDF: £1,295,632

Mounts Bay

End date: Dec 2021

## St Austell Resilient Regeneration (StARR)



StARR aims to reduce flood risk to communities living and working in the Par and St Blazey area. The project is made up of approx 30 schemes within the Par River and Treffry River catchments to reduce flood risk to make it an even better place to live and work.

<https://letstalk.cornwall.gov.uk/starr>

ERDF: £7,791,029

St Austell Bay

End date: Mar 2023



## Green Infrastructure for Growth 2



Green Infrastructure for Growth 2, also known as Making Space for Nature, is increasing the wildlife value, accessibility and public enjoyment of publicly managed green spaces in and around the urban areas of Bodmin, Falmouth, Launceston, Liskeard, Penryn, Newquay, St Austell.

[www.cornwall.gov.uk/spacefornature](http://www.cornwall.gov.uk/spacefornature)

ERDF: £2,419,624

Cornwall

End date: Dec 2022

## Growing Goss



Growing Goss is improving the conservation status of Goss Moor, a nationally and internationally important wetland habitat in mid-Cornwall. The project aims to create an ecologically resilient landscape, restore ecosystem services and wildlife value, and provide enhanced access, recreation and engagement opportunities.

[www.facebook.com/The-Growing-Goss-Project-352357748784412/](https://www.facebook.com/The-Growing-Goss-Project-352357748784412/)

ERDF: £1,041,327

Goss Moor

End date: Jun 2022

## Environmental Growth for Business (Tevi)



Led by Exeter University, this project is providing support to small and medium sized enterprises. It helps them identify business opportunities by enhancing environmental mapping and data sources in Cornwall. Graduate placements and a grant scheme are also incorporated into the project.

[www.tevi.co.uk](http://www.tevi.co.uk)

**Tevi**

ERDF: £3,493,948

Cornwall & Isles of Scilly

End date: Dec 2022

## Water for Growth



Water for Growth focuses on Cornwall's two most important inland river fisheries - the Camel and Fowey. It protects and enhances these rivers by restoring ecosystems, removing fish migration barriers and improving spawning areas. The restoration work supports sustainable economic growth in the fisheries and angling sectors as well as tourism businesses.

[www.wrt.org.uk/project/water-for-growth/](http://www.wrt.org.uk/project/water-for-growth/)



ERDF: £1,837,084

Rivers Camel & Fowey

End date: Apr 2023

## Green Infrastructure for Growth 1

Increased the wildlife value, accessibility and public enjoyment of green spaces in and around Camborne, Pool, Redruth, Hayle, Bude, Saltash and Penzance. **ERDF: £2,802,008 | Cornwall**

## TRANSPORT

### A30 Carland Cross to Chiverton Cross (Construction Phase)



Following the development phase, this transport scheme comprises construction of a 14km (8.7 mile) 70mph dual carriageway, connecting to the existing A30 dual carriageway at Chiverton and Carland Cross. Works will also include replacement of the roundabouts at Chiverton Cross and Carland Cross. [highwaysengland.co.uk/our-work/south-west/a30-chiverton-to-carland-cross/](https://highwaysengland.co.uk/our-work/south-west/a30-chiverton-to-carland-cross/)

**ERDF: £12,000,000**

**Mid-Cornwall**

**End date: Dec 2023**

### Drive EV2



Led by Cornwall Council, the DRIVE EV2 project is extending the deployment of electric vehicle charge points through Cornwall and the Isles of Scilly. It is enabling the transition to more efficient Ultra Low Emission Vehicles (ULEVs) by deploying a minimum of 150 fast/rapid EV charge point units.

**ERDF: £2,900,000**

**Cornwall & Isles of Scilly**

**End date: Mar 2023**

### Isles of Scilly GO EV SMART



This project is installing electric vehicle chargers and solar canopies, and deploying electric vehicles around the Isles of Scilly to be used in a car share scheme. A car share ICT platform is also being put in place to integrate with the islands' Energy Resource Management Platform and optimise the use of the vehicles. [www.ioscv.co.uk/carshare](http://www.ioscv.co.uk/carshare)

**ERDF: £2,460,941**

**Isles of Scilly**

**End date: Dec 2022**



## St Agnes to Threemilestone Saints Trail



The Saints Trails are four new off-road multi-user trails totalling 30km in length. They provide links between Newquay, Perranporth, St Agnes and Truro and address longstanding severance issues associated with the A30 trunk road.

ERDF: £5,158,456

Mid-Cornwall

End date: Dec 2023

## Truro Loops



The Truro Loops concept is for a series of pedestrian and cycling improvements in Truro, supporting a shift to low carbon, environmentally friendly travel. This project delivers part of that concept by creating an 8.3km cycle route joining the A390 at County Hall to Newham, the city centre and the railway station.

ERDF: £606,537

Truro

End date: Dec 2022

## TRANSPORT - DELIVERED

### A30 Carland Cross to Chiverton Cross (Development Phase)

Development phase of a project to dual the A30 between Carland Cross and Chiverton Cross, near Truro.

ERDF: £8,000,000 | Truro

### Cornwall Rail Mainline Signal Enhancement

Additional signalling to allow two trains per hour in each direction between Plymouth and Penzance.

ERDF: £11,900,000 | Cornwall

### Penzance Heliport Multi Modal Hub

Developed a heliport in Penzance to facilitate the reinstatement of a year round helicopter service between Cornwall and the Isles of Scilly. ERDF: £1,886,018 | Penzance / Isles of Scilly

## TRANSPORT - DELIVERED

### St Erth Multi Modal Hub

Developed the area around St Erth railway station as a transport hub serving West Cornwall.

**ERDF £5,400,000 | St Erth**

### Sustainable Transport in Cornwall

Installation of 12 charging points and purchase of six electric vehicles which will be used by Age UK's voluntary drivers. **ERDF: £241,601 | Cornwall & Isles of Scilly**

## WORK & INCLUSION

### Building Futures Partnership



Led by Cornwall Council, this project supports people living in areas of deprivation, poor quality homes, or without a settled home, recognising that they are at greater risk of multiple social exclusion and marginalisation.

**ESF: £3,512,543**

**Cornwall**

**End date: Dec 2023**

### Communities Working Together



This project provides bespoke coaching and training to support adults who are out of work. The programme will help more than 1000 people on their journey towards joining the workforce. **\*Bodmin, Camborne, Pool, Redruth, Falmouth, Looe, Newquay, Penzance, St Austell and Torpoint.**

**[www.lpcornwall.org/supporting-unemployed-adults-2](http://www.lpcornwall.org/supporting-unemployed-adults-2)**

**ESF: £3,255,801**

**Bodmin \***

**End date: Dec 2023**

## COMPASS



COMPASS supports young people aged 15-24 to find their direction into education, employment and training. It particularly supports those with special educational needs and disabilities (SEND) or social, emotional and mental health (SEMH) needs.

[cswgroup.co.uk/home/young-people/compass/](https://cswgroup.co.uk/home/young-people/compass/)

ESF: £1,998,525

Cornwall & Isles of Scilly

End date: Dec 2023

## Food for Change 2



Food for Change 2 builds on the earlier Food for Change project which supported users of foodbanks, mental health and other social services to address barriers to their active inclusion in the economy. Food for Change 2 will extend delivery to Falmouth and Bodmin and continue to support Redruth, Truro, St Austell and Newquay.

[www.cornwallislesofscillygrowthprogramme.org.uk/projects/food-for-change-2/](http://www.cornwallislesofscillygrowthprogramme.org.uk/projects/food-for-change-2/)

ESF: £1,415,355

Cornwall & Isles of Scilly

End date: Mar 2022

## Foundations for Work



An active inclusion project, Foundations for Work reaches families in workless households and offers bespoke coaching and training to support adults on their journey towards the workforce.

[lpcornwall.org/supporting-unemployed-adults-2](http://lpcornwall.org/supporting-unemployed-adults-2)

ESF: £2,000,000

Cornwall & Isles of Scilly

End date: Dec 2023

## Future Foundations



This project is delivering a programme of activities for economically inactive and unemployed young people to increase awareness, recruitment, retention and student success in Traineeships and Apprenticeships. The project offers careers guidance and employability skills to support a successful transition into work and financial assistance to overcome barriers to accessing an apprenticeship. [www.truro-penwith.ac.uk/why-choose-us/esf-programme](http://www.truro-penwith.ac.uk/why-choose-us/esf-programme)

ESF: £717,384

Cornwall & Isles of Scilly

End date: Nov 2023





## Game Changer



Game Changer aims to transform the lives of young people living in challenging circumstances. The project supports young people to overcome the challenges they face, understand their individual aptitudes and interests, develop skills and experiences and build connectivity and networks. This results in young people moving into work or long term learning. [realideas.org/about-us/our-work/game-changer/](https://realideas.org/about-us/our-work/game-changer/)



ESF: £2,568,600

Cornwall & Isles of Scilly

End date: Nov 2022

## Health Works for Cornwall



Health Works for Cornwall aims to support 5500 workless individuals where there are health-related barriers to employment. Cornwall Development Company is leading a partnership who provide specialist engagement, careers education, information, advice and guidance and support into or towards employment. [www.cornwalldevelopmentcompany.co.uk/programme/health-works-for-cornwall/](https://www.cornwalldevelopmentcompany.co.uk/programme/health-works-for-cornwall/)



ESF: £7,800,000

Cornwall & Isles of Scilly

End date: Dec 2023

## Liskeard Together



This project tests whether, by supporting people to re-engage with their community, individual wellbeing is improved, people progress towards employment and the town itself benefits. The project will support people who are not working to develop their confidence and life skills through training and connections with the local community. [www.facebook.com/LiskeardTogether](https://www.facebook.com/LiskeardTogether)

ESF: £726,109

Liskeard

End date: Dec 2021

## People Hub



The People Hub provides free confidential advice and support regarding work, employment, and training to residents across Cornwall and the Isles of Scilly.

[www.peoplehub.info](https://www.peoplehub.info)



ESF: £4,290,593

Cornwall & Isles of Scilly

End date: Dec 2023



## Positive People - Coast to Coast



Positive People offers a lifeline to people who are not in work no matter what the reason. The project helps build confidence, skills and a sense of hope for the future. Positive People believe that no individual barriers should stand in the way of what someone wants to achieve and provides 1:1 support to help people move forward. [www.pluss.org.uk/positive-people/areas/cornwall](http://www.pluss.org.uk/positive-people/areas/cornwall)



ESF: £4,331,786

Mid-Cornwall

End date: Sep 2022

## Positive People - South and East



Positive People offers a lifeline to people who are not in work no matter what the reason. The project helps build confidence, skills and a sense of hope for the future. Positive People believe that no individual barriers should stand in the way of what someone wants to achieve and provides 1:1 support to help people move forward. [www.pluss.org.uk/positive-people/areas/cornwall](http://www.pluss.org.uk/positive-people/areas/cornwall)



ESF: £3,348,896

South & East Cornwall

End date: Sep 2022

## Recovery College Cornwall



The Recovery College for Cornwall is an innovative project that aims to create a new pathway for people experiencing mental ill health to learn to recover from illness and live healthy, connected and positive lives, contributing to communities in a way that benefits both them and society.

[www.recoverycollegecornwall.org.uk](http://www.recoverycollegecornwall.org.uk)



ESF: £1,105,956

Cornwall & Isles of Scilly

End date: Dec 2021

## Skills Your Way



Skills Your Way offers young people who are disengaged (or at risk of disengaging) from education, employment and training support appropriate to their individual needs to help them move into sustainable education, employment or training.

[www.cornwallmarine.net/skills-your-way](http://www.cornwallmarine.net/skills-your-way)  
[www.pentreath.co.uk/skills-your-way](http://www.pentreath.co.uk/skills-your-way)  
[www.lpcornwall.org/supporting-young-people-2](http://www.lpcornwall.org/supporting-young-people-2)

**skills your way**

ESF: £2,200,000

Cornwall & Isles of Scilly

End date: Sep 2023

## Supporting Jobseekers in Cornwall



Managed by Whitehead Ross, this project supports unemployed people back into work through credited/non-accredited learning along with pastoral support. The programme focuses on two priority sectors – Child Workforce and Construction sectors.

[www.wrecltd.co.uk](http://www.wrecltd.co.uk)

ESF: £766,582

Cornwall & Isles of Scilly

End date: Dec 2023

## Sustainable Lives



Sustainable Lives utilises a community green hub to offer holistic wrap around support at a local level. Participants build up confidence and are supported to access local work opportunities via tailored training and skills development opportunities.

[www.newquayorchard.co.uk/sustainablelives](http://www.newquayorchard.co.uk/sustainablelives)



ESF: £423,315

Newquay

End date: May 2022

## Village Works



This project works at local level with the most economically excluded and unemployed people in rural coastal areas to help them into personal and skills development and employment programmes. It uses methods that are sustainable and can be replicated in other locations. \* **Helston & the Lizard Peninsula**. [www.inclusioncornwall.co.uk/village-works-2](http://www.inclusioncornwall.co.uk/village-works-2)



ESF: £588,125

Bude & Camelford\*

End date: Mar 2022

## Who Dares Works – West Cornwall & Isles of Scilly



As part of the Big Lottery's Building Better Opportunities Programme, Who Dares Works is led by Active Plus and brings together seventeen social enterprises to help people who need the most support to connect or reconnect with work, education and training. The partnership helps participants help themselves, wherever possible through helping others. [activeplus.org.uk/who-dares-works](http://activeplus.org.uk/who-dares-works)



ESF: £2,766,958

West Cornwall & Isles of Scilly

End date: Mar 2022



## Work Routes



Focusing on those who are most disadvantaged and furthest from the labour market, this project provides tailored support to address worklessness. Flexible, personalised packages of support enhance engagement and work readiness, and in-work support helps ensure employment can be sustained. Delivered by Reed in Partnership, Lizard Pathways and Pluss.

[www.workroutes.co.uk](http://www.workroutes.co.uk)



**WORK ROUTES**

**ESF: £12,900,000**

**Cornwall & Isles of Scilly**

**End date: Nov 2021**

## SKILLS



## Accelerating Circular Skills for Cornwall & the Isles of Scilly (ARCA)



The ARCA project creates an environment that stimulates and supports innovation, collaboration, research & development and skills to drive the development of new products and services, and complementary approaches that will improve productivity and deliver sustainable growth of Cornish SMEs and micro businesses. It is a partnership between the University of Exeter and Truro & Penwith College.

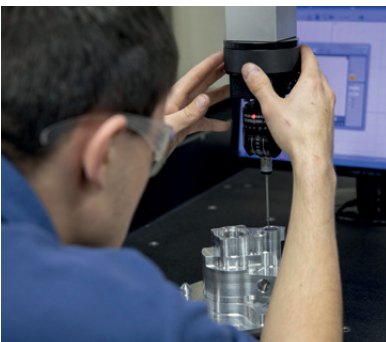
ARCA | Accelerating Circular Skills  
Entrepreneurship. Management. Innovation.

**ERDF: £1,156,165**

**Mid-Cornwall**

**End date: Dec 2023**

## Bedrock Futures



Bedrock Futures is helping businesses identify the future skills needs of their workforces. It will build awareness of the impact of new technology and climate change on the global economy, local and individual businesses.

[www.lpcornwall.org/workforce-development](http://www.lpcornwall.org/workforce-development)

**ERDF: £4,920,000**

**Cornwall & Isles of Scilly**

**End date: Sep 2023**



## Boosting Careers with Digital Skills



Managed by Digital Peninsula Network, this project is focused on upskilling members of the workforce who experience in-work poverty. It is delivering a range of digital skills complemented by Basic Skills training to enable participants to progress their careers and address issues of in-work poverty.

[www.digitalpeninsula.org/boosting-careers](http://www.digitalpeninsula.org/boosting-careers)



ESF: £650,505

Cornwall & Isles of Scilly

End date: Mar 2023

## Business Clusters



Through this project, Truro and Penwith College is collaborating with seven sector lead partners to review and revise the local training offer in line with industry requirements.

[www.truro-penwith.ac.uk/why-choose-us/esf-programme](http://www.truro-penwith.ac.uk/why-choose-us/esf-programme)

ESF: £5,499,249

Cornwall & Isles of Scilly

End date: Jun 2023

## Cornwall and Isles of Scilly Skills Hub 2



This additional investment allows the Cornwall and Isles of Scilly Skills Hub to continue to provide a free, independent and impartial advisory service which helps businesses identify skills gaps and access the skills guidance and training they need to perform better. **\*total for phases 1 and 2**

[www.ciosskillshub.com](http://www.ciosskillshub.com)



ESF: £2,885,998 \*

Cornwall & Isles of Scilly

End date: Mar 2023

## Cultivator Skills 2



Based in Redruth, Cultivator offers an integrated programme of skills and business development for businesses in the creative industries. Support includes specialist coaching, mentoring and targeted investment as well as advanced skills for businesses in the sector. **\*figure for phases 1 and 2**

[www.cultivatorcornwall.org.uk](http://www.cultivatorcornwall.org.uk)



ESF: £2,414,172 \*

Cornwall & Isles of Scilly

End date: Sep 2022



## Employer Led Skills



The Employer Led Skills project, led by Cornwall Marine Network, addresses skills gaps across Cornwall and the Isles of Scilly by delivering business-led programmes designed to upskill the workforce.

[www.cornwallmarine.net](http://www.cornwallmarine.net)

ESF: £2,7000,000

Cornwall & Isles of Scilly

End date: Mar 2023

## Flourish



Managed by the Learning Partnership for Cornwall and the Isles of Scilly, Flourish supports people to achieve qualifications in basic skills and vocational skills at levels 2, 3 and 4, promoting a culture of lifelong learning and personal growth and development. It also aims to increase people's skills to enable them to access more sustainable employment with less reliance on benefits. [lpcornwall.org/workforce-development](http://lpcornwall.org/workforce-development)

ESF: £720,000

Cornwall & Isles of Scilly

End date: Jun 2023

## Meeting Smart Specialisation Business Needs through Higher Level Skills



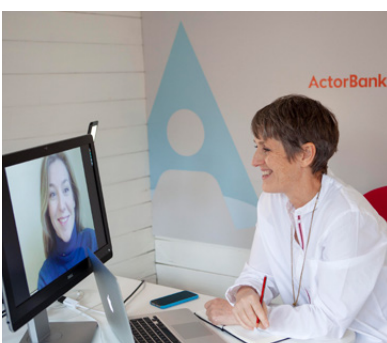
Led by the University of Exeter, this project supports the development of higher level skills aligned to Cornwall and the Isles of Scilly's five smart specialisation sectors - marine technology, space and aerospace, digital, e-health and agri-tech - which have been identified for research, development and innovation investment. [www.exeter.ac.uk/cornwall/business/iibcornwall/higherlevelskills/sshis/](http://www.exeter.ac.uk/cornwall/business/iibcornwall/higherlevelskills/sshis/)

ESF: £1,726,430

Cornwall & Isles of Scilly

End date: Jul 2023

## Progressing Businesses through Digital Skills



Managed by Digital Peninsula Network, this project works with employers and employees, delivering a range of digital skills complemented with Basic Skills training.

[www.digitalpeninsula.org/progressing-businesses](http://www.digitalpeninsula.org/progressing-businesses)

**PROGRESSING BUSINESSES** >>>  
**THROUGH DIGITAL SKILLS** >>>

ESF: £603,027

Cornwall & Isles of Scilly

End date: Mar 2023

## RISE (Raising Industry Skills for Employers - for Hospitality, Health and Social Care)



RISE focuses on upgrading the knowledge, skills and competences of the workforce in the Hospitality and Health & Social Care sectors, offering industry-relevant skills provision, and accessible and appropriate delivery models. The project is led by Truro and Penwith College.

[www.truro-penwith.ac.uk/why-choose-us/esf-programme](http://www.truro-penwith.ac.uk/why-choose-us/esf-programme)

ESF: £548,934

Cornwall & Isles of Scilly

End date: Sep 2022

## SHINE (Skills Help for Individuals & New Enterprises)



Led by Truro and Penwith College, SHINE delivers learning that addresses skills shortages and growth opportunities in Cornwall and the Isles of Scilly. Learners are supported to identify training that will enhance their immediate prospects alongside longer-term recommendations for sustained upskilling.

[www.truro-penwith.ac.uk/why-choose-us/esf-programme](http://www.truro-penwith.ac.uk/why-choose-us/esf-programme)

ESF: £498,493

Cornwall & Isles of Scilly

End date: Sep 2022

## Skills Lab



Skills Lab is promoting awareness in the local labour market of the need for relevant skills provision. This is achieved through active engagement with institutions and employers, particularly small and medium sized enterprises and micro businesses.

[lpcornwall.org/workforce-development](http://lpcornwall.org/workforce-development)

ESF: £2,000,000

Cornwall & Isles of Scilly

End date: Dec 2023

## Skills Store



Skills Store is the sister project to Skills Lab. It delivers vocational, generic and leadership skills to the workforce of Cornwall & the Isles of Scilly and promotes flexible learning pathways.

[lpcornwall.org/workforce-development](http://lpcornwall.org/workforce-development)

ESF: £1,700,000

Cornwall & Isles of Scilly

End date: Dec 2023

## Smarter Skills for Tourism Futures



This project works alongside hospitality, leisure, travel and tourism businesses to deliver those up-skilling activities that are not currently being addressed by employers, including a focus on basic skills, areas of skills shortages and leadership and management training.

ESF: 540,158

Cornwall & Isles of Scilly

End date: Jun 2023

## VCSE Learning Academy



Led by the Learning Partnership for Cornwall and the Isles of Scilly this project is developing a virtual Voluntary, Community and Social Enterprise (VCSE) Learning Academy to support three priority development areas for the sector: business management including leadership and management; cross sector working learning from other business sectors and sharing within the VCSE sector; and Place Based Social Action supporting skills to improve effectiveness of community action.

[lpcornwall.org/supporting-the-voluntary-sector](http://lpcornwall.org/supporting-the-voluntary-sector)

ESF: £447,219

Cornwall & Isles of Scilly

End date: Dec 2021

## Widening Participation Through Skills



Delivered by Truro & Penwith College and the University of Plymouth, this project is broadening participation in higher level skills by raising aspirations and awareness of opportunities, particularly supporting those least likely to enter higher or further education.

[www.plymouth.ac.uk/business-partners/business-services/enterprise-solutions/esf-widening-participation-skills-partnership](http://www.plymouth.ac.uk/business-partners/business-services/enterprise-solutions/esf-widening-participation-skills-partnership)

ESF: £2,942,993

Cornwall & Isles of Scilly

End date: Dec 2022



## Ambitions

---

Helped young people progress into education, employment (including self-employment) or training.

**ESF: £3,772,424 | Cornwall & Isles of Scilly**

## Cornwall & Isles of Scilly Skills Hub (phase 1)

---

A free, impartial advisory service to help businesses identify skills gaps and access training. Followed by phase 2.

**ESF: £1,541,036 | Cornwall & Isles of Scilly**

## Developing Leaders

---

Trained people to gain recognised leadership qualifications.

**ESF: £1,500,000 | Cornwall & Isles of Scilly**

## Developing Restorative Leadership

---

Delivered a Level 3 qualification for Teaching Assistants and Healthcare Assistants using the Restorative Practice model. **ESF: £149,774 | Cornwall & Isles of Scilly**

## Developing Skills for Business

---

Improved the labour market relevance of education and training systems and supported businesses to address their skills needs. **ESF £4,400,000 | Cornwall & Isles of Scilly**

## Family and Community Essential Skills

---

Supported people facing in-work poverty to progress and increase their pay and working hours, or obtain higher paid jobs. **ESF: £540,111 | Cornwall & Isles of Scilly**

## Family Learning - routes to improved health and wellbeing

---

Used family learning to engage adults who were not in work and begin to remove their barriers to the labour market. **ESF: £106,229 | Cornwall & Isles of Scilly**

## Food for Change

---

Built Food for Change partnerships in Redruth, Truro, St Austell and Newquay which supported people to address barriers to their active inclusion in the economy. **ESF £1,052,999 | Redruth, Truro, St Austell and Newquay**

## Grow Digital Cornwall

---

Worked with businesses to identify their digital skills needs to increase business productivity, improve competitiveness and access new markets. **ESF: £641,812 | Cornwall & Isles of Scilly**





### Hospitality Forum

---

Also known as Hospitality Table, the project brought together employers from hospitality and tourism to create initiatives to raise career aspirations, increase recruitment and improve skills, productivity and quality.

**ESF: £500,000 | Cornwall & Isles of Scilly**

### ICAN

---

Enhanced National Careers Service support for people over 25. **ESF: £547,444 | Cornwall & Isles of Scilly**

### Innovation in Higher Level Skills

---

Improved the labour market relevance of skills by developing links between small businesses and educational institutions. **ESF: £1,874,427 | Cornwall & Isles of Scilly**

### Living Well to Work

---

Explored the potential of the Living Well approach for delivering inclusive labour markets in Cornwall and the Isles of Scilly, promoting equal opportunities, active participation, and improving employability.

**ESF: £992,374 | Cornwall & Isles of Scilly**

### REACH Cornwall

---

Worked closely with social care and healthcare organisations to develop and deliver dynamic, innovative and responsive training. Also provided a platform to raise the profile of the sector and inspire people to consider careers in care and health. **ESF: £500,000 | Cornwall & Isles of Scilly**

### Skills for Young People

---

Supported skills development for young people who are not in education, employment or training.

**ESF: £1,277,889 | Cornwall & Isles of Scilly**

### Smart Tenants

---

Working with social housing tenants, this project developed a range of support and training to stabilise households' finances. **ESF: £1,373,905 | Cornwall & Isles of Scilly**

### Supported Pathways for Progressive Employment – Business Sector Led

---

Supported employees to develop their skills and enhance their career prospects.

**ESF: £2,554,889 | Cornwall & Isles of Scilly**

## WORK, INCLUSION & SKILLS - DELIVERED

### Supported Pathways for Progressive Employment – Individuals in the Workforce

Supported employees to develop their skills and enhance their career prospects.

**ESF: £2,554,889 | Cornwall & Isles of Scilly**

### Together for Tourism Futures

Worked with businesses to identify, develop and deliver the skills required in the Hospitality, Leisure, Travel and Tourism sector. **ESF: £551,912 | Cornwall & Isles of Scilly**

### Upskilling the Voluntary Community and Social Enterprise Sector

Upskilled people working in the VCSE sector to enable better sustained engagement and relationships to support priority groups towards employability. **ESF: £730,000 | Cornwall & Isles of Scilly**

### Working Together - Atlantic and Moor

Tackled the poverty and social exclusion faced by the most disadvantaged people.

**ESF: £2,395,360 | North Cornwall**

## COMMUNITY LED LOCAL DEVELOPMENT

### Community Led Local Development (CLLD) - Delivery Stage



Community Led Local Development (CLLD) is a programme funded by both ESF and ERDF making positive change in core neighbourhoods across Cornwall. The programme supports businesses and people to gain funding for projects that will make a difference to their communities and the local economy; creating jobs and opportunities, helping individuals to gain skills and confidence, and enabling businesses to grow. [communityledcornwall.co.uk](http://communityledcornwall.co.uk)

**CILD** Enabling Business  
Inspiring People

**ESF: £5,890,000**

**End date: Dec 2022**

**ERDF: £8,716,000**

**End date: Mar 2023**

**Cornwall**

## COMMUNITY LED LOCAL DEVELOPMENT - DELIVERED

### Community Led Local Development - Preparatory Support

Production of Local Development Strategies for the most deprived communities in Local Action Group Areas.

**ERDF: £72,000 | ESF: £64,000 | Cornwall**

## PROGRAMME SUPPORT

### Integrated Territorial Investment (ITI) Support Team



This team supports the delivery of the Growth Programme in Cornwall and the Isles of Scilly by working with the managing authorities to develop calls; helping organisations from the private, voluntary, community and social enterprise sectors to access the programme and publicising the programme's opportunities and successes.

[cornwallislesofscillygrowthprogramme.org.uk/](http://cornwallislesofscillygrowthprogramme.org.uk/)

**ERDF: £935,825**

**ESF: £937,500**

**Cornwall & Isles of Scilly**

**End date: Oct 2021**

## PROGRAMME SUPPORT - DELIVERED

### Cornwall and Isles of Scilly Technical Assistance - Intermediate Body

Put in place capacity and expertise to carry out functions delegated to Cornwall Council as Intermediate Body for the Growth Programme in Cornwall and the Isles of Scilly.

**ERDF: £131,114 | ESF: £131,114 | Cornwall & Isles of Scilly**

### Isles of Scilly Technical Assistance

The technical assistance team helped organisations develop projects that are eligible, compliant and good value.

**ERDF: £617,337 | Isles of Scilly**

## RURAL DEVELOPMENT AND FISHERIES



Funding for rural development and fisheries is available through the European Agricultural Fund for Rural Development (EAFRD) and the European Maritime and Fisheries Fund. For further details please see:

**European Agricultural Fund for Rural Development (EAFRD)**

**European Maritime and Fisheries Fund (EMFF)**

## RURAL DEVELOPMENT PROJECTS

These projects are being funded by the European Agricultural Fund for Rural Development (EAFRD) as part of the Growth Programme.

### Beachside Leisure Holidays Limited

This project provides a social hub, which includes an on-site restaurant and all weather soft play, at Beachside Holiday Park.

Applicant: Beachside Leisure Holiday Ltd.

EAFRD: £169,808

Hayle

Tourism

### Brian Etherington Meat Company Ltd

Brian Etherington Meat Company has secured funding for a new cold store facility in Redruth.

Applicant: Brian Etherington Meat Company Ltd

EAFRD: £281,935

Redruth

Food Processing

### Capacity Productivity Improvements

Cornish Charcuterie Ltd aims to create a state of the art climate controlled slicing and packing plant, new butchery and an additional large drying room.

Applicant: Cornish Charcuterie Ltd

EAFRD: £99,969

Bude

Food Processing

### Carron Farm

Funding is being provided for this project to install a craft distillery and warehouse on the Isles of Scilly.

Applicant: Carron Farm

EAFRD: £37,094

Isles of Scilly

Food Processing





## Carvannel Dairy Processing

This project has established a new milk processing business, focused on producing and promoting a range of free range un-homogenised dairy product, using milk entirely produced from this one holding. The product range is to include: bottled milk, cream and yogurts. Applicant: Carvannel Free Range Dairy Ltd

EAFRD: £83,813

Portreath

Food Processing

## Conditioning/Storage Project

EAFRD funding used by EW Button & Son Ltd to construct and equip two cold store conditioning units.

EAFRD: £191,590

Bodmin

Food Processing

## Coombeshead Farm Hotel Limited

This project enables the bakery to move into a standalone space at Lewannick, Launceston.

Applicant: Coombeshead Farm Hotel Limited

EAFRD: £114,355

Launceston

Food Processing

## Cornish Charcuterie Ltd

With this funding Cornish Charcuterie is creating a new production facility and plant to increase capacity at Norton Barton, Launcells, Bude.

Applicant: Cornish Charcuterie Ltd

EAFRD: £180,248

Bude

Food Processing

## Cosmos - Community Observatory

EAFRD funding is being used by Cosmos Community Observatory to provide two observation domes, two plinths for anyone wishing to use their own telescope and a dry room to house associated computer and camera equipment.

Applicant: Cosmos - Community Observatory

EAFRD: £59,056

Isles of Scilly

Tourism

## Helford River Children's Sailing Trust

This project is improving facilities and purchase sailing craft. This includes constructing toilet and changing facilities, including disabled access facilities. The new sailing craft include accessible craft.

EAFRD: £224,366

Helston

Tourism



## Juliet's Garden Restaurant

This project has enhanced access and car park facilities at Juliet's Garden Restaurant on the Isles of Scilly.

Applicant: Juliet's Garden Restaurant

EAFRD: £12,003

Isles of Scilly

Tourism

## New Production Unit

Popti Ltd's project has developed a new manufacturing facility to produce quality savoury biscuits.

Applicant: Popti Ltd

EAFRD: £164,482

Bude

Food Processing

## National Trust

This EAFRD grant has been used to improve thirteen sections of the South West Coast Path in Cornwall.

Applicant: National Trust

EAFRD: £105,600

Cornwall

Tourism

## Mount Hawke Youth and Community Group

This project provides an outdoor skate park in Truro.

EAFRD: £159,360

Truro

Tourism

## North Coast Cabins Ltd

EAFRD is supporting this project to move the business to new larger premises at Hantergantick St Breward.

Applicant: North Coast Cabins Ltd

EAFRD: £80,074

St Breward

Business Development

## Packhouse Infrastructure Investment

Funding for Riviera Produce Ltd to expand the existing packhouse and to purchase packing and processing equipment for broccoli, cauliflower and other green vegetables.

Applicant: Riviera Produce

EAFRD: £424,828

Hayle

Food Processing



## Rum Distillery and Visitor Area

Through this project The Cornish Distilling Company Limited has created a new production facility and tasting room.

Applicant: The Cornish Distilling Company Limited

EAFRD: £164,941

North Barton

Food Processing

## Sellelectronics Ltd

Sellelectronics, an electronics company in Falmouth, is receiving a grant to facilitate the fit out of new business premises. This includes the installation of a mezzanine floor, lifts and electrostatic flooring, and the purchase of new machinery.

[www.sellelectronics.co.uk](http://www.sellelectronics.co.uk)

EAFRD: £127,388

Falmouth

Business Support

## Supply Chain Project

A grant has been awarded to Seaways Flower Farm to construct a new building with office space, along with new processing equipment and infrastructure. This enhances productivity and the efficiency of processing scented narcissi flowers and bulbs. Applicant: Seaways Flower Farm

EAFRD: £84,543

St Mary's, Isles of Scilly

Processing

## The Sanctuary

EAFRD funding is used to convert a redundant building into a multi-use activity building in Fowey.

Applicant: The Sanctuary Cornwall

EAFRD: £63,200

Fowey

Tourism

## Trebursye Farm Business Park

A project to create 5,000sq ft of workspace at Trebursye Farm, Launceston.

Applicant: Trebursye Farm Business Park

EAFRD: £151,106

Launceston

Business Development

## Troll Trader Ltd

This investment provides expansion space and new machinery for Troll Trader at Indian Queens.

Applicant: Troll Trader Ltd

EAFRD: £83,637

Indian Queens

Business Development

## RURAL DEVELOPMENT PROJECTS



### Urban Biodiversity

Through this project a traditional Cornish amphitheatre and a community building including a café has been created in Newquay.

Applicant: Urban Biodiversity

EAFRD: £239,611

Newquay

Tourism

### Webb Ellis Estates Ltd

Investing in tourism infrastructure, this project created a large car park for the Bodmin Jail tourist attraction.

EAFRD: £164,624

Bodmin

Tourism

## COUNTRYSIDE PRODUCTIVITY SCHEME



Countryside Productivity is a national EAFRD programme for farmers, woodland owners and forestry contractors.

### Storage Facilities

By constructing four new controlled atmospheric storage facilities this project aims to improve the quality of brassicas produced on farm to meet the increasing demands of the market. Applicant: PE Simmons and Son Ltd

EAFRD: £584,558

Hayle

Countryside Productivity



## LEADER PROJECTS

LEADER funding was made available to local businesses, communities, farmers, foresters and land owners and was managed by the Local Action Groups.

For more information go to: [www.localactioncornwall.co.uk](http://www.localactioncornwall.co.uk).

## ATLANTIC & MOOR LOCAL ACTION GROUP

### Burly Bed

The Burly Bed project enabled the purchase of a bale breaker and shredder to be inserted into the existing production line for the processing of Miscanthus into horse bedding.

Applicant: CB and JBS Button

EAFRD: £35,028

St Mabyn

Business & farm diversification

### Cornish Water Blow Moulder

With EAFRD investment Cornish Natural Spring Water Ltd purchased and installed a blow moulding machine which enables them to blow their own plastic bottles for their water, reducing raw material costs and leading to increased growth in the business. Applicant: Cornish Natural Spring Water Ltd

EAFRD: £33,876

St Clether

Business & farm diversification

### Crackington Cider Company

This project has established a new cider making facility through the installation of a dedicated new timber frame barn and the purchase of cider making equipment.

Applicant: Tremayna Services Ltd

EAFRD: £36,549

St Gennys

Farm Productivity

### Creation of an Artist Studio

This investment is used to renovate a derelict farm house for use as an art studio and gallery. The premises are also used for training groups in life drawings, photographic and other creative art work.

Applicant: N H Burden

EAFRD: £18,940

Launceston

Business & farm diversification



## Extension of Bude Multi-Use Route around Whalesborough Farm

Rural development funding is being used to construct an all-weather grass track for pedestrians, pushchairs, mobility scooters and cyclists which links in with the nearby canal towpath and multi-use trails to Widemouth. Applicant: J & F Proudfoot

EAFRD: £152,058

Marhamchurch

Rural Tourism

## Hallagenna Reception

EAFRD is being used to enhance the customer experience at Hallagenna Riding by constructing a purpose built heated reception and locker/staff room facilities.

Applicant: Hallagenna Riding

EAFRD: £26,417

St Breward, Bodmin

Business & farm diversification

## Heated Visitor Reception / Information / Reading Room

This investment improves the campsite facilities at South Penquite Farm, leading to growth in the business, through the construction of a new purpose built heated reception area and information/reading room. Applicant: South Penquite Farm

EAFRD: £16,870

Blisland

Rural Tourism

## Installation of Voluntary Milking System

LEADER funding is used to purchase a two robotic milking machines enabling the farm to become a fully operational organic dairy farm with organic designation due in August 2018.

Applicant: SG & GH Jose

EAFRD: £50,000

Warbstow, Launceston

Farm Productivity

## Lower Amble Farm Handling System and Rainwater Harvesting

A mobile cattle handling system set up has been purchased through this project, including a forcing pen, specialist squeeze crush, race, segregation penning and weigh cells, which are used on cattle at eight different sites. Applicant: Dally Partners

EAFRD: £6,905

St Minver, Wadebridge

Farm Productivity

## Treworder Kiln Dried Logs

This investment is used to purchase a firewood processing plant which enables lumber to be processed on site to produce kiln dried logs.

Applicant: JA and CA Davis.

EAFRD: £19,433

Egloshayle

Forestry Productivity



## Acland Farm - Collar Based Rumination System for Dairy Cows

Acquisition and installation of a collar based rumination system for the dairy cow herd. The system provides early detection of decreased rumination in sick cows, times of heat stress and those close to calving. Applicant: Mr & Mrs DJ Heller

EAFRD: £32,786

Blackwater, Truro

Farm Productivity

## Cuckoo Valley Cider Farm

The project aims to develop a cider, apple juice, honey and soft fruit business on a new site near Portreath. The grant provides the building and all the equipment necessary to produce cider and apple juice which is to be sold locally.

Applicant: Ms L O'Connor & Mr C Holmes

EAFRD: £34,678

Portreath

Farm Productivity

## Infrastructure & Facility Improvements, Beacon Cottage Farm Holidays

The campsite facilities (toilets, showers, washing area and laundry) at Beacon Cottage Farm Holidays have been improved and six grass pitches have been converted into hard standing pitches. Applicant: J & J Sawle and Son

EAFRD: £27,540

St Agnes

Rural Tourism

## King Edward Mine Museum Redevelopment

This project fits out a new café at the King Edward Mine in the Assay House, bringing the redundant building back into use.

Applicant: Cornwall Council

EAFRD: £18,999

Troon

Culture Heritage Activity

## New Egg Grader Purchase

To purchase a computer driven egg grading machine doubling throughput and enabling improved labelling and a wider range of egg numbers in boxes. The increased productivity also enable new markets to be pursued.

Applicant: Mr Colin Carter

EAFRD: £114,674

Perranwell

Farm Productivity

## Restaurant Expansion

Building extension project at the Hawkins Arms to provide a purpose built dining area. This is enabling demand to be met and allows more space to be offered for other activities.

Applicant: Hawkins Arms

EAFRD: £35,000

Zelah

Business & farm diversification



## Sheep Mobile Handling and Weighing Equipment

Mobile sheep handling and weighing equipment has been purchased for use across multiple sites to improve the productivity of the operation.

Applicant: W & R Taffinder

EAFRD: £3,896

St Mawes

Farm Productivity

## Trevella Garden Weddings

This project enables the start-up of an outdoor wedding venue through support of investment in a civil ceremony pavilion, tipis, on-site parking, signage and a business website.

Applicant: Trevella Garden Weddings

EAFRD: £27,267

Trispen, Truro

Business & farm diversification

## Truro Loops Project - Feasibility Study

LEADER funds enables a feasibility study to be carried into the viability of developing access infrastructure in the Truro River Basin. The study provides information on the benefits and costs of carrying out improvements to footpaths, cycle paths, roads and river access. Applicant: Truro River Working Group CIC

EAFRD: £51,208

Truro

Rural Services

## Workbox Truro

A project to refurbish a listed building in Truro to provide affordable workspace where new micro businesses can share facilities and skills, leading to increased turnover and reduced isolation experienced by rural home-based micros.

Applicant: Workhubs Network CIC

EAFRD: £93,825

Truro

Business & farm diversification

## Wild Tipi Start Up

LEADER funding is used to purchase a tipi and specialist trailer to transport it enabling the start up business to hire it out for events and to run pop up restaurants in Cornwall.

Applicant: Wild Tipi Ltd

EAFRD: £5,735

Ladock

Business & farm diversification





## Colwith Distillery Farm

Investment used to build and equip a distillery for the production of vodka and gin, using local potatoes, including an associated visitor centre.

Applicant: Colwith Farm Distillery

EAFRD: £90,627

Treesmill

Business & farm diversification

## Cornish Gouda Cheese Production Increase

The project is to purchase an additional cheese vat which allows the business to increase its production to more than double per day as current demand is outstripping current stock/produce. The project is securing supply to their existing and new customers. Applicant: Cornish Gouda Co

EAFRD: £14,594

Lanreath, Looe

Farm Productivity

## Fowey Business Hub

The project develops a site owned by a landscaping and maintenance business to create a workshop/storage area and office space for the business as well as three additional office units for other small local businesses, creating a local business hub.

Applicant: Wheelbarrow Gardening Ltd

EAFRD: £94,700

Fowey

Business & farm diversification

## Fowey Brewery Acceleration Project

Improved brewery equipment resulting in a tenfold increase in brewing capacity. It also allows the business to enter the cask and keg market and develop sales nationally and internationally.

Applicant: The Fowey Brewery Ltd

EAFRD: £11,760

Lostwithiel

Business & farm diversification

## Fursdon Farm

A mobile sheep handling system with lamb weigher and a software system for electronic identification is being purchased through this project.

EAFRD: £3,474

Liskeard

Farm Productivity

## Installation of a Walk-in Chiller

The purpose of this project is to install a walk-in chiller in an old dairy building to facilitate the processing of turkeys.

Applicant: Treway Farm Cornish Turkeys

EAFRD: £5,748

Coombe

Farm Productivity

## SOUTH EAST LOCAL ACTION GROUP



### Looe Valley Trail Feasibility and Scoping Study

This project looks at the feasibility of creating a multi-use cycling and walking trail along the East and West Looe Valleys between Liskeard, Looe and Lanhydrock.

Applicant: Looe Development Trust

EAFRD: £20,566

Looe

Rural Tourism

### Small Wood Management with Alpine Tractor

LEADER funding is used to purchase a compact Alpine tractor, side arm flail, timer forwarding trailer and a log grapple to enable the expansion of the business in small scale woodland management.

Applicant: Adam Philips

EAFRD: £20,793

St Ann's Chapel

Forestry Productivity

### Upgrading of Dairy Facilities

The project is to improve the health and welfare of the dairy herd and increase productivity through the installation of a range of automated cleaning and monitoring equipment.

Applicant: MJC Hambly

EAFRD: £33,145

Pengover, Liskeard

Farm Productivity

## WEST CORNWALL LOCAL ACTION GROUP



### Community Café Development

Ruan Minor Post Office has applied for LEADER funding to create a community café with 24 covers through the complete reconfiguration of the existing space in the shop to create a shop, post office and café.

Applicant: Ruan Minor Post Office

EAFRD: £22,467

Ruan Minor

Business & farm diversification

### Duke Stone - Workshop Machinery

LEADER funding is used to purchase a compact Alpine tractor, side arm flail, timer forwarding trailer and a log grapple to enable the expansion of the business in small scale woodland management.

Applicant: Duke Stone of Cornwall Ltd

EAFRD: £36,729

Helston

Business & farm diversification



## Foundation First Equestrian Centre: start up facilities

This project supports the development of a new business delivering natural horsemanship training, natural horsemanship holidays, horse health rehabilitation and facility hire. Funding is used to create a steel framed barn, sand surfaced riding school, hard core parking area and new access track. Applicant: Foundation First Equestrian Centre

EAFRD: £35,352

Ruan Minor

Business & farm diversification

## Godolphin Cross Chapel

To purchase a former Methodist Chapel in order to secure and expand its use as a community facility within the local area at Godolphin Cross.

Applicant: Godolphin Cross Community Association

EAFRD: £25,000

Godolphin Cross

Rural Services

## Gweal Mellin Cider

The acquisition of cider production equipment enables the start-up of this rural cider production business, which focuses on the production of craft ciders made from the applicant's own cider apples.

Applicant: Gweal Mellin Cider Co

EAFRD: £4,959

Constantine

Farm Productivity

## Improvements to Herd Health, Performance, Monitoring & Energy Efficiency

LEADER funding enables the purchase of a cluster flush system, herd activity system, separation gates and management software as well as variable speed vacuum pumps. The equipment allows micro management of the herd and increased efficiency. Applicant: RN & D Jenkin

EAFRD: £34,570

Manaccan, Helston

Farm Productivity

## I Should Coco - Chocolate Workshop

To enable the purchase of chocolate production equipment, workshop fitting equipment, the development of an e-commerce website and associated marketing costs to enable a micro artisan chocolatier business to develop chocolate workshops and increase productivity/production. Applicant: I Should Coco.

EAFRD: £32,346

St Ives

Business & farm diversification

## Installation of Cluster Flush System to Existing Milking Parlour

To install a cluster flush system to the existing milking parlour to help prevent mastitis by helping to eliminate cross-contamination.

Applicant: PA Tylor

EAFRD: £8,200

St Keverne

Farm Productivity



## KC Warne Services Ltd Equipment

To purchase additional equipment including an automatic tray filling machine and hoist and a new van to enable the expansion of the business.

Applicant: KC Warne Services Ltd

EAFRD: £13,030

Fraddam, Hayle

Business & farm diversification

## Milk Vending Project

To convert an existing office into a milk processing room and install relevant pasteurising and processing equipment, vending machines and appropriate cover and storage space on the farm for the sale of the milk.

Applicant: Trink Dairy Ltd

EAFRD: £36,357

Trink, St Ives

Farm Productivity

## Moomaid of Zennor Ice Cream Ltd Growth

To invest in new processing equipment (incl a Pasteuriser, ingredients feeder and ripple pump) to upgrade the current facility and enable the expansion of production.

Applicant: Moomaid of Zennor

EAFRD: £23,063

Zennor

Farm Productivity

## Moonmilk

To invest in equipment (pasteuriser, Ice Builder) and brand development to enable the pasteurisation of their own milk in house and establishing the brand-Moonmilk.

Applicant: G B and J G Ellis

EAFRD: £5,660

St Buryan

Farm Productivity

## Nanfan Farm - grading equipment

To purchase and install a coil bed bulb grading system to replace the current jump grading system leading to improvements in the end products.

Applicant: JP and R Curnow

EAFRD: £8,500

Cury

Farm Productivity





## New Indoor Swimming Pool at Cape Cornwall Golf & Leisure

The construction of an indoor heated swimming pool within the Cape Golf and Leisure complex improving their out of season offering.

Applicant: Cape Cornwall Golf and Leisure

EAFRD: £30,465

Cape Cornwall

Business & farm diversification

## Production of Cornish Kern

To create a new chilled storage and packing facility for the new product Cornish Kern cheese.

Applicant: Lynher Dairies Ltd

EAFRD: £118,496

Ponsanooth

Farm Productivity

## St Buryan Farm Shop, Meat Processing & Pasty Making

The project is to build a Farm Shop and meat processing unit on a greenfield site, through which the business will be able to process its own meat and sell its own produce.

Applicant: WR Bone & Son

EAFRD: £120,948

St Buryan

Productivity & Diversification

## St Ives Cider Increasing Production and Range

To purchase apple/cider processing capital equipment and promotion stands at London trade shows to enable new products (bottled cider/screw cap apple juice) to be introduced and marketed to new areas.

Applicant: St Ives Cider Ltd

EAFRD: £9,929

St Ives

Farm Productivity

## Yallah Coffee - Business Development

To enable the purchase of coffee roasting equipment, the construction of a mobile Events Bar, the development of a web subscription service and construction works to the premises to enable a micro coffee roasting business to expand and develop an onsite training facility.

Applicant: Yallah Coffee

EAFRD: £9,274

Mabe/Budock Water

Business & farm diversification

**Produced by:**

Growth Programme Communications Team

Economic Growth Service

Cornwall Council

Level 5, Zone A, Pydar House

Pydar Street

Truro, TR1 1XU

**Tel: 01872 224770**

**Email:** [growthprogramme@cornwall.gov.uk](mailto:growthprogramme@cornwall.gov.uk)

[www.cornwallislesofscillygrowthprogramme.org.uk](http://www.cornwallislesofscillygrowthprogramme.org.uk)



**Follow us on twitter @growthprogramme**

---

The Growth Programme Communications Team is part funded by the European Regional Development Fund and the European Social Fund.

