



Investing in smart, sustainable & inclusive growth across Cornwall & the Isles of Scilly

European Regional Development Fund (2014-2020)

The Growth Programme for Cornwall and the Isles of Scilly

The Growth Programme is the European economic regeneration programme for Cornwall and the Isles of Scilly. Running since 2014, it builds on over fifteen years of European funding investment with many of the projects funded during the programme continuing their delivery up until 2023. The Growth Programme was set up with the aim of contributing to the EU and local ambition to deliver smart, sustainable and inclusive growth.

Three quarters of the Growth Programme funding allocation has been funded by the European Regional Development Fund (ERDF), with the remaining 25% funded by the European Social Fund (ESF), which supported skills and inclusion. Used in combination, ERDF and ESF investments were deployed to help strengthen the economy for Cornwall and the Isles and Scilly and

improve the quality of life of Cornish citizens. This investment has also been instrumental in helping the local recovery following the unpredicted Covid-19 pandemic.

At the end of 2021, £515million from ERDF has been invested in over 100 projects* to help:

- Stimulate business growth;
- Increase levels of research and innovation;
- Transition to low carbon initiatives and resource efficiency;
- Improve Cornwall's digital connectivity and transport infrastructure;
- Preserve, protect and restore biodiversity and soils;
- Improve environmental protection and adapt to climate change.

As the majority of the funding allocation for the 2014-2020 period has now been committed to projects, it is time to take stock. This is an opportunity to showcase the innovation and diversity of initiatives that have been part-funded by ERDF to support the businesses and residents of Cornwall and the Isles of Scilly. While we are taking the time to look back at the journey so far and the foundations laid by the Growth Programme's investment, our gaze remains firmly fixed on the future and the opportunities that are now open to Cornwall and the Isles of Scilly.

** As of October 2021*



106

ERDF-funded projects

75%

of ESIF Growth Programme value

15

new workspaces

£515m

from ERDF has been invested

43km

of railway with new or enhanced signalling installation

14km

of improved road between Chiverton & Carland Cross

Innovation

Marine-i	4
Launchpad	5
AeroSpace Cornwall	5
Agri-tech Cornwall	5



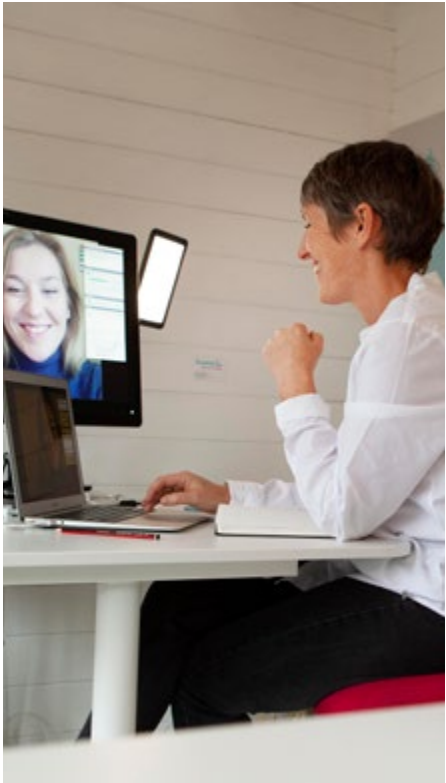
Business Growth

CIOS Growth Hub	8
Outset Cornwall	8
CIOS Investment Fund	8
New workspaces	9
ESAM	10
Krowji	10
Aerohub Business Park	10



Connectivity

Transport improvements	12
St Erth Multi Modal Hub	13
A30 Chiverton to Carland Cross	13
Superfast Cornwall	15
Superfast Business Cornwall	16



Energy & Low Carbon

Geothermal Engineering Ltd	18
Jubilee Pool	19
Local Energy Market	19



Climate Change & Environment

Green Infrastructure for Growth	21
Tevi	22
StARR	22



Communities

Community-Led Local Development	24
IOS Voucher Scheme	25
Smart Energy Islands	25

Appendix

What's next	26
Integration with the European Social Fund	27
List of beneficiaries	28



Research & Innovation

Strengthening research, technological development and innovation.

ERDF funding is supporting research and collaboration between small and medium-sized enterprises, and research institutions. The programme is encouraging the commercialisation of research and supporting the development of new products and services for established businesses.

ERDF funding

£80m

Helping to create Cornwall's marine industries of the future

Marine-i is a pioneering business support programme that has been designed to foster innovation in the marine technology sector in Cornwall.



Marine technology is a vital industry for Cornwall, and one with high growth potential for the future. It will have a huge influence on the economic prospects of the county.

The goal is to help put Cornwall at the forefront of the marine tech industries of the future. These include marine energy, marine manufacturing, maritime operations and marine environmental technologies. Part funded by ERDF, this programme aims to stimulate and support research and innovation, to help Cornish marine businesses exploit new market opportunities.

Marine-i offers one of the most complete packages of innovation support ever designed for the marine sector. This includes business consultancy, research expertise, grant funding, access to some of the best testing facilities in Europe, and graduate support at a subsidised cost. The project provides a bespoke package to marine businesses that is geared to their specific needs and delivered through one point of contact.

There are six project partners, who work closely together to create the Marine-i offer: University of Exeter, University of Plymouth, Cornwall College Group, Cornwall Marine Network, Cornwall Development Company, and the Offshore Renewable Energy Catapult. Each has its own specialist expertise, which is applied to support innovative marine businesses.

Achievements to date:

- 131 local marine businesses have been supported with market-leading research.
- 51 projects have received grant funding.
- 16 graduates have been placed with local businesses at a subsidised cost.
- 23 new products have been launched into the market.
- 27 new businesses have relocated to, or opened new offices, in Cornwall.

Marine-i has supported local companies working in wind, wave and tidal power generation, helping to pioneer new ways of delivering the green energy of the future.

The next ten years will see the building of floating offshore wind farms in the Celtic Sea. Floating wind turbines can be located in very deep waters, in areas with the strongest winds. With Cornwall at the forefront of this new industry, Marine-i is supporting a range of Cornish innovators who are working in this field, including:

- J-Supplied, which is developing technology for the 3D printing of turbine blades;
- Tugdock, which has designed an innovative floating platform for offshore wind construction projects;
- Falco Drone Technologies, which is creating a long-range drone that can be used for surveying offshore wind farms;
- Feritech Global, which plans to create the world's first autonomous vehicle for subsea geotechnical surveys;
- Inyanga Maritime, which is developing a new system for anchoring floating turbines;
- 4 Earth Intelligence, which plans to use satellite data to assist in the building and maintenance of offshore wind farms.

This pioneering Cornwall-based innovation is building a platform for future growth, making this an exciting time for the marine technology industry. The new ideas that are currently being developed in Cornwall can help lay the foundations for economic prosperity and job creation. All of these innovations could have a significant impact on marine technology around the world, helping to secure Cornwall's reputation as a leader in this field.

The Marine-i programme runs until December 2022, with support available for additional local SMEs.

131
local marine
businesses
supported with
research

51
projects received
grant funding

16
graduates
placed with
local businesses

23
new products
launched

27
new businesses
opened offices
in Cornwall



Launchpad

The Launchpad programme attracts talent and inward investment, supporting Cornwall's digital economy by creating high-growth tech companies.

Launchpad's unique model starts with market-led challenges. Graduates with complementary skills are then selected and tasked with solving the industry challenges, developing a start-up around the solution.

Challenges are set by leading industry partners such as BBC Studios, Goonhilly Earth Station Ltd., and Amazon, with more companies and organisations now approaching

the university. After one year in the Launchpad programme, graduates become directors of their own company and remain on campus for an additional year of support as they scale up, employ staff and secure investment.

Funding for the programme has been secured to 2022, which will drive local economic growth by delivering 288 jobs, 72 new businesses and 72 new to market products. As the businesses grow, they require skilled employees, which contributes towards retaining graduates and knowledge-based jobs in the region.



AeroSpace Cornwall

AeroSpace Cornwall is a research, development (R&D) and innovation project, which enables businesses to pioneer new products in the space and aerospace sectors.

The project is now in its second phase, which aims to increase the supply chain cluster in the space and aerospace sectors, create highly skilled jobs in Cornwall and launch new products into the marketplace. Business support is provided in the areas of understanding marketing opportunities, developing a product and service, and supplying the market.

The project also offers financial support through small fully funded grants, which are used to attend events to meet suppliers or customers. Larger match-funded R&D grants are for businesses to develop their product or service, whether independently or in collaboration with other businesses or research institutions.

The first phase of the project met its target of supporting 52 businesses, with phase two targeted to support 60 businesses.



Agri-tech Cornwall

Led by the Duchy College Rural Business School, Agri-tech Cornwall and the Isles of Scilly has supported, since 2017, over 100 Cornish small and medium-sized enterprises to research and develop innovations for agriculture.

Four core research themes undertaken by the Universities of Exeter and Plymouth, Rothamsted Research and Duchy College are at the heart of the project:

- Animal health and welfare in dairy cattle.
- Resource efficiency in the production process.
- Improving the productivity of speciality crop production.
- Utilising technology to drive productivity and innovation.

The project also created Future Farm, an innovative dairy systems research platform at Duchy College. The facility enables research, teaching and knowledge transfer on a working dairy farm.

Business Growth

Enhancing the competitiveness of small and medium-sized enterprises.

From grants and loans to start-up support, ERDF investment has been encouraging healthy business growth. Creating the conditions for SMEs to thrive, funding is being used to offer business guidance and coaching, access to finance, incubator space and new workspaces. Over 8,000 businesses across Cornwall and the Isles of Scilly have already been benefitting from this support.

ERDF funding

£138m

Boosting growth across Cornwall & the Isles of Scilly

Cornwall and the Isles of Scilly
Manufacturing Advisory Programme (CMAP)

CMAP provides specialist, hands-on support and grant funding to small and medium-sized manufacturing businesses in the Cornwall and the Isles of Scilly LEP area.

The purpose of the programme, which is led by SWMAS, is to enhance the productivity and competitiveness of these businesses to promote growth. This support is delivered 'in the field' by local SWMAS manufacturing specialists with significant experience of working with manufacturing businesses in Cornwall and the Isles of Scilly.

Specialist hands-on support and grant funding is available around four key themes:

- Business strategy – developing new models and implementing clear growth plans, including

introducing new technologies, products or working methods through effective leadership.

- Operational efficiency – identifying and overcoming obstacles that limit manufacturing capacity, business productivity, performance and growth.
- Innovation – introducing new technologies, products, materials and ways of working to drive growth.
- Supply chains – supporting companies to access new markets and to develop their supplier base.

One of the companies that has benefitted from CMAP is Gripsure, which manufactures and supplies

a wide range of non-slip decking products from its facility in Cornwall.

The business has grown steadily over the years and, thanks to an increase in DIY projects during the UK lockdown, saw a large uplift in demand during the summer months, despite challenges brought about by the Covid-19 pandemic.

To ensure that the company can continue to thrive, it has progressed plans for facilities under licence in Japan, and a further plant in France to operate as a separate subsidiary.

SWMAS has a long-standing relationship with Gripsure and was able to offer support at this critical stage of its growth plan through CMAP.

The CMAP project began in July 2020 and will continue to June 2023.





CIOS Growth Hub

Launched in 2016 and now part of a network of 38 “hubs” across England, the Cornwall and Isles of Scilly (CIOS) Growth Hub offers free business reviews to those who are self-employed, and to small and medium-sized enterprises (SMEs).

The project provides impartial and expert support on specific issues such as starting a new business, HR, finance, management, manufacture, export, research and development; ultimately supporting local business growth.

While reviewing business goals

and offering guidance, the project also helps with access to funding, awarding 460 Kickstart grants since its launch.

The Growth Hub works alongside its sister organisation, the Skills Hub, which is part-funded by the European Social Fund, and together they form a local gateway to business support, skills and training opportunities.

Growth Hub has already supported 4,000 businesses across Cornwall and the Isles of Scilly to find the right guidance and support to work smarter, develop and grow.



Outset Cornwall

Outset Cornwall is an award-winning business start-up programme. Funded by the ERDF, HM Government and the Outset Foundation, it is now in its twelfth year of operation.

The programme works with a wide range of people from across Cornwall and the Isles of Scilly, who are seeking support with exploring self-employment and developing their business ideas.

With help from the Outset team, users are able to create solid foundations from which to launch a

new business, and to maintain this business through its first years and into a point of sustainability or growth.

Since its launch in 2009, Outset has helped over 900 businesses to get up and running across the county, creating over 1,000 jobs, and assisting over 3,000 individuals.

Karen Cornelius, who launched her new business The Refill Hut, says: “Thanks to Outset, my new business is up and running and I’m doing something I love; making a real difference.”



CIOS Investment Fund

The Cornwall & Isles of Scilly Investment Fund (CIOSIF) provides commercially focused finance through a debt and equity fund.

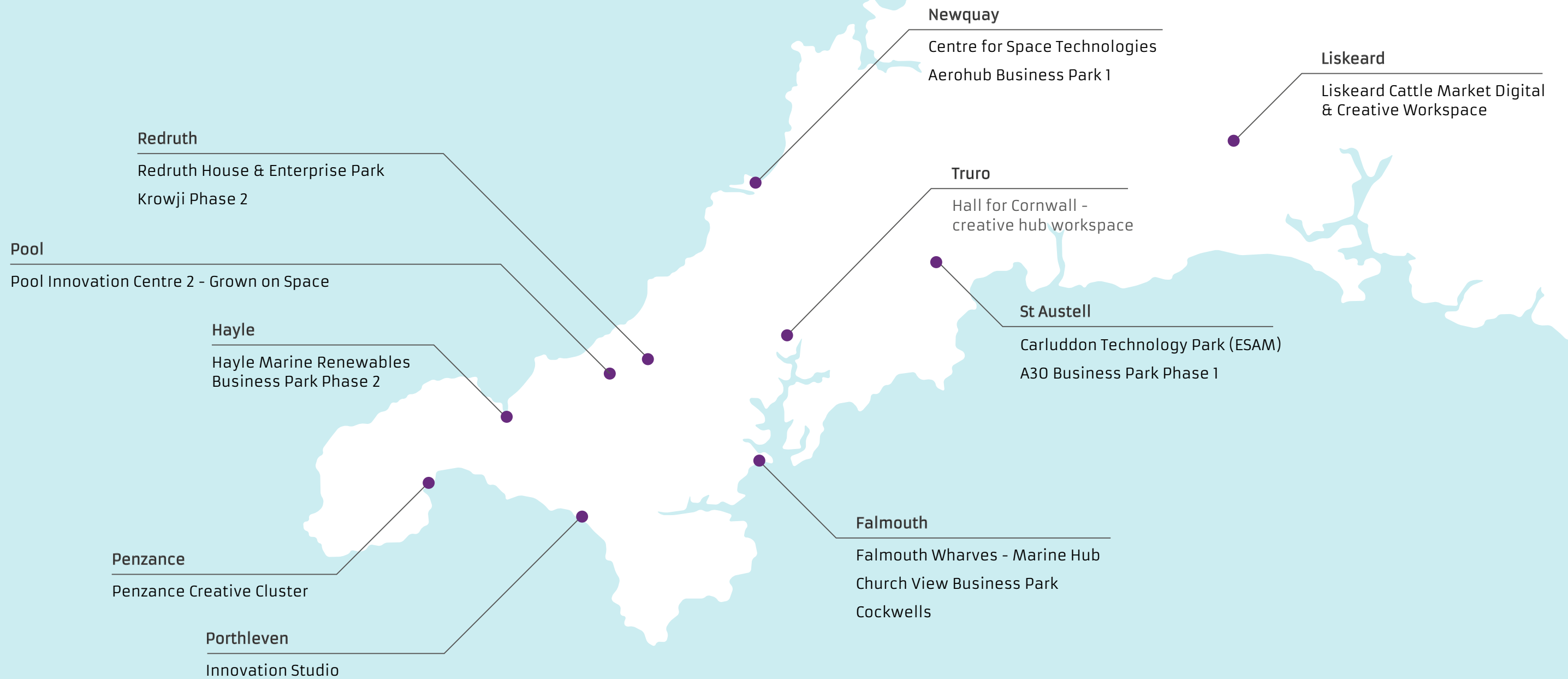
CIOSIF is a collaboration between the Government-owned British Business Bank and the Cornwall & Isles of Scilly Local Enterprise Partnership. The fund aims to transform the finance landscape for smaller businesses in the area and to realise the region’s potential to achieve economic growth through enterprise.

This is a key part of the Government’s vision, aimed at boosting the region’s economy and supporting the growth of smaller businesses (SMEs) between 2018 and 2023. Designed to support SMEs, the project assists with access to finance where barriers exist and seeks to address an equity gap in start-up, early stage and development capital.

To date, the fund has benefitted 21 SMEs and invested £7.8m across 39 investments. Twelve SMEs have received equity finance of £5.2m.

15 new workspaces

Over £39m in ERDF funding has been invested in the creation of high quality and flexible workspaces in multiple locations across Cornwall. These have formed hubs for innovation and enterprise in booming sectors, while also supporting the growth of SMEs and local communities alike. Sustainability and connectivity principles have been kept in mind throughout their development, to ensure the final result responds to the needs of thriving 21st-century businesses.





ESAM

The Carluddon Technology Park Project, also known as The Enterprise Space for Advanced Manufacturing (ESAM), offers a home to new and existing businesses in advanced manufacturing, engineering and low carbon environmental goods and services.

The flagship development on the Carluddon Technology Park in St Austell offers both offices and industrial units designed to promote innovation and collaborative working and to act as a catalyst for start-ups.

Advanced manufacturing is

considered a fundamental building block in securing Cornwall's future economic prosperity, and the investment into ESAM aims to put the building blocks in place to help the sector reach its potential.

ESAM's location and build were carefully considered, designed to the BREEAM "Excellent" standard, located within easy reach of the A30, mainline rail services and airport, with its workspace developed to be flexible and scalable.

Since its launch in 2018, ESAM's 32 units are now at 78% occupancy.



Krowji

The Krowji Phase 2 redevelopment project created a new workspace building at Krowji in Redruth, Cornwall's largest creative hub.

The new building forms a 950m2 extension to the existing Phase 1 Percy Williams Building at Krowji. Phase 2 involved the demolition of a single-storey former classroom block and the construction of a new BREEAM Excellent workspace building, with 21 studios.

While contributing to reinforcing the creative industries cluster at Krowji, the new workspaces are increasing retention of graduate talent in Cornwall. The increased space available for tenants is adding to the mix of businesses on site, and also supporting the wider growth of the creative industries sector, one of the fastest growing sectors in the UK economy.



Aerohub Business Park

The Aerohub Business Park Phase 1 project enabled the construction of Sector 2 at the entrance of Cornwall Airport Newquay.

The new development created nine high-quality offices and eight modern industrial workshops. The project builds on previous ERDF investments from the Objective One and Convergence 2011-2013 programmes, which also led to Cornwall Airport Newquay being awarded Enterprise Zone status by the UK Government in 2011.

Two years after its opening in 2019, the building is about to reach 100% occupancy. A total of eight businesses, predominantly engineering, manufacturing and renewable energy companies, are now based at Sector 2, enabling the Aerohub Business Park Phase 1 project to deliver on the ambition of supporting Cornwall's aerospace and aerospace supply chain industry.

The Aerohub Business Park Phase 1 is located next to Cornwall Airport Newquay, which has been earmarked as Europe's first horizontal launch Spaceport for small satellites, in partnership with launch company Virgin Orbit. Launches from Spaceport Cornwall are expected to start in spring 2022.

A man with glasses and a beard is kneeling in a server room, working on a laptop. He is wearing a dark shirt and trousers. The room is filled with server racks and cables, creating a blue-toned background.

Connectivity

Creating the physical and digital infrastructure for business success.

In a global marketplace, communication and connectivity have never been so important. Across Cornwall, funding has been allocated to improving and enhancing connectivity, from road and rail to an information superhighway made possible through superfast broadband.

Transport funding

£50m

Digital funding

£17m

Transport and Infrastructure



14km

of single carriageway road
upgraded to dual carriageway



2

trains per hour in each direction
between Plymouth and Penzance
due to resignalling



140%

increase in passengers using the
train to St Ives since St Erth Multi
Modal Hub was completed



79.6%

CEEQUAL Outstanding
Achievement Awards 2019
received by St Erth scheme



2

roundabouts replaced
with two-level motorway
style roundabouts



£11.9m

ERDF invested in mainline
resignalling scheme



2

new multi-use trails
planned for 2023



150

fast/rapid EV charge
point units to be
installed across Cornwall



A30 Chiverton to Carland Cross

Representing the largest amount of Designated Funds on a major scheme anywhere in the country, this project has seen the creation of an 8.7-mile (14km), dual carriageway between Chiverton and Carland Cross.

This section of the A30 is of strategic importance to Cornwall, but has historically suffered from being a single carriageway with high levels of traffic.

Carried out by National Highways, the extensive works also include the replacement of Chiverton Cross roundabout with a new, two-level motorway-style roundabout; a new, two-level partial junction at Chybucca, with west-facing slip roads connecting to the new dual carriageway;

replacement of the existing roundabout at Carland Cross with a two-level motorway-style junction; new bridges and access across the new and old roads; and retention of the existing A30 for local traffic.

Works began in March 2020, with permanent structures work beginning in May 2021. At this stage, concrete pre-cast units were lifted into position for Chiverton Underpass, a 74m-long crossing point for walkers, cyclists and horse riders beneath the new A30 dual carriageway and slip roads.

With the project now well underway, it is expected that works will be completed, and the new stretch of road will be open to the public, in December 2022.



St Erth Multi Modal Hub

The St Erth Multi Modal Hub is part of a plan to support sustainable transport in Cornwall and the Isles of Scilly.

The project comprises infrastructure improvements to the roads, pedestrian crossings and car parks at St Erth Railway Station, which has also resulted in further investment from Great Western Railway and Network Rail into the train station facilities and signalling.

St Erth Railway Station is an important asset for west Cornwall, as the station is served by both mainline trains on the Penzance to Paddington route and branch line services from St Erth to St Ives. Investment into the hub is designed to provide an opportunity for west Cornwall locals, commuters and tourists to switch to a more sustainable transport solution.

There are now an additional 422 car parking spaces, including 26 disabled spaces, in the new south car park, as well as an increased total of 94 spaces in the north car park, including 10 disabled spaces. Other works include a cycle storage facility, safe pedestrian access and improvements to the bus stops, taxi rank and drop off points, making the hub a viable alternative to contributing to the heavy traffic on the surrounding roads.

36
additional
disabled parking
spaces created

Digital Connectivity



9,700

of the most challenging premises
in Cornwall upgraded with full
fibre technology (FTTP) ^{1 2}



95%

coverage of 30+ Mbps
superfast broadband with 42%
coverage of future-proofed,
full fibre technology ³



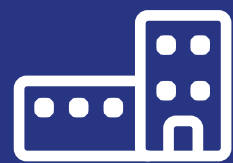
17,000

registered businesses connected
to Superfast in July 2020 ¹



79%

satisfaction rate with both
speed and reliability of
network performance ¹



1,300

additional businesses
connected to broadband
through Superfast 2 ^{1 2}



4,700

additional households
connected to broadband
through Superfast 2 ^{1 2}



419

jobs created and
safeguarded by
Superfast 2 ^{1 2}



220

start-up launches
encouraged by
Superfast 2 ¹

Sources: 1) Superfast Cornwall Evaluation Sep 2020 www.superfastcornwall.org/wp-content/uploads/2020/10/Superfast-Evaluation-Report-Final-Issued-160920.pdf

2) Latest Superfast Cornwall figures as at Sep 2021 3) <http://labs.thinkbroadband.com/local/E06000052>

Superfast Cornwall

Making Cornwall one of the best-connected places in the world.

First set up in 2011, Superfast Cornwall has played a vital role in boosting digital connectivity and improving the productivity of local businesses.

The pioneering programme connected residents, businesses and community venues to superfast broadband. The benefits of this are far and wide, from enabling businesses to work more productively to opening new leisure opportunities. By the programme's conclusion in December 2020, Cornwall had reached 95% coverage of 30+ Mbps superfast broadband.

Superfast Cornwall programmes have a strong track record of delivering broadband projects across Cornwall.

When former City fund managers Richard and Fionagh Harding moved into their 350-acre farm in Bude in 2006, they had no experience of farming. Today, with the support of their four children, the couple are running the highly successful Norton Barton Artisan Food Village, home to some of the county's top artisan food producers.

Having experienced the challenges of making a living from farming during the early years, the couple took the decision to diversify, and in 2011, they created Cornish Charcuterie, producing a range of pates, rilletes, salamis, chorizo and cured meats from their herd of Cornish Lop pigs.

In 2015, Norton Barton became one of the first Food Enterprise Zones in Cornwall and the only artisan village in the UK.

"Our vision has been to create a group of quality artisan producers happy to work together to develop a thriving business community and create more jobs in the local economy," says Richard Harding.

"Becoming a Food Enterprise Zone meant we could offer premises and support to innovative local start-ups to enable them to develop and trial new products without the financial risk that comes from going it alone. This has helped to encourage more talented people to join our local food industry."

The food village is also a popular visitor destination, with a cafe, bar, function room and woodland walk

all on site. The family is committed to being as environmentally friendly as possible, with 65-85% of power for the food village generated by wind turbine. They are also using recyclable packaging wherever possible and seeking alternatives to plastics.

One challenge often facing rural businesses looking to expand is access to the internet, with slow speeds and unreliable connections making it difficult to develop new online markets.

However, thanks to support from the Superfast Cornwall project and the Cornwall and Isles of Scilly Growth Programme, Norton Barton is now connected to full fibre superfast broadband.

"The superfast connection has made a massive difference to us," says Richard.

"It's had a really positive impact for the whole enterprise. With our previous broadband connection, low speeds and poor reliability were a real barrier to growth. Now we are able to make the most of digital technology and the cloud, which means we can streamline our operations and grow."

"The arrival of superfast broadband means that our artisan businesses can now make much more effective use of online sales, reaching out to new customers as well as supplying existing customers remotely. We can also make better use of video as part of our marketing."

Access to superfast has provided benefits for other areas of the business. The food village was also able to invest in high-tech production equipment



"Superfast broadband has revolutionised our business, opening up new opportunities and enabling us to turn our ambitious vision into reality."

Richard Harding, Norton Barton Artisan Food Village

manufactured in the Netherlands. The superfast connection means diagnosis and preventative maintenance can now be carried out remotely by the manufacturers, saving time and money.

"Superfast broadband has revolutionised our business, opening up new opportunities and enabling us to turn our ambitious vision into reality," says Richard. "Without a superfast connection, I think there was a real danger that the enterprise could have stagnated."

"Now we are able to move ahead with confidence and plan for future growth. As a result, these are really exciting times for everyone working at Norton Barton."

Superfast Business Cornwall

Helping ambitious businesses succeed through digital technology.

Running between 2016 and 2019, the Superfast Business Cornwall programme was delivered by SERCO. It helped over 600 SMEs in Cornwall and the Isles of Scilly to understand, adopt and exploit new technologies to develop new products or services, reach new markets and improve business performance.

The 12-hour fully funded programme offered expert advice and guidance on how to understand,

“As a direct result of this project we have already created two new jobs and we expect to create further new jobs very soon.”

Angela Harvey, Flann Microwave

adopt and exploit digital technology for growth. Its focus was on helping businesses with growth potential to reach their goals by utilising the digital technology that was right for them.

The project offered digital guides, tools, workshops, master classes and one-to-one diagnostics to businesses.

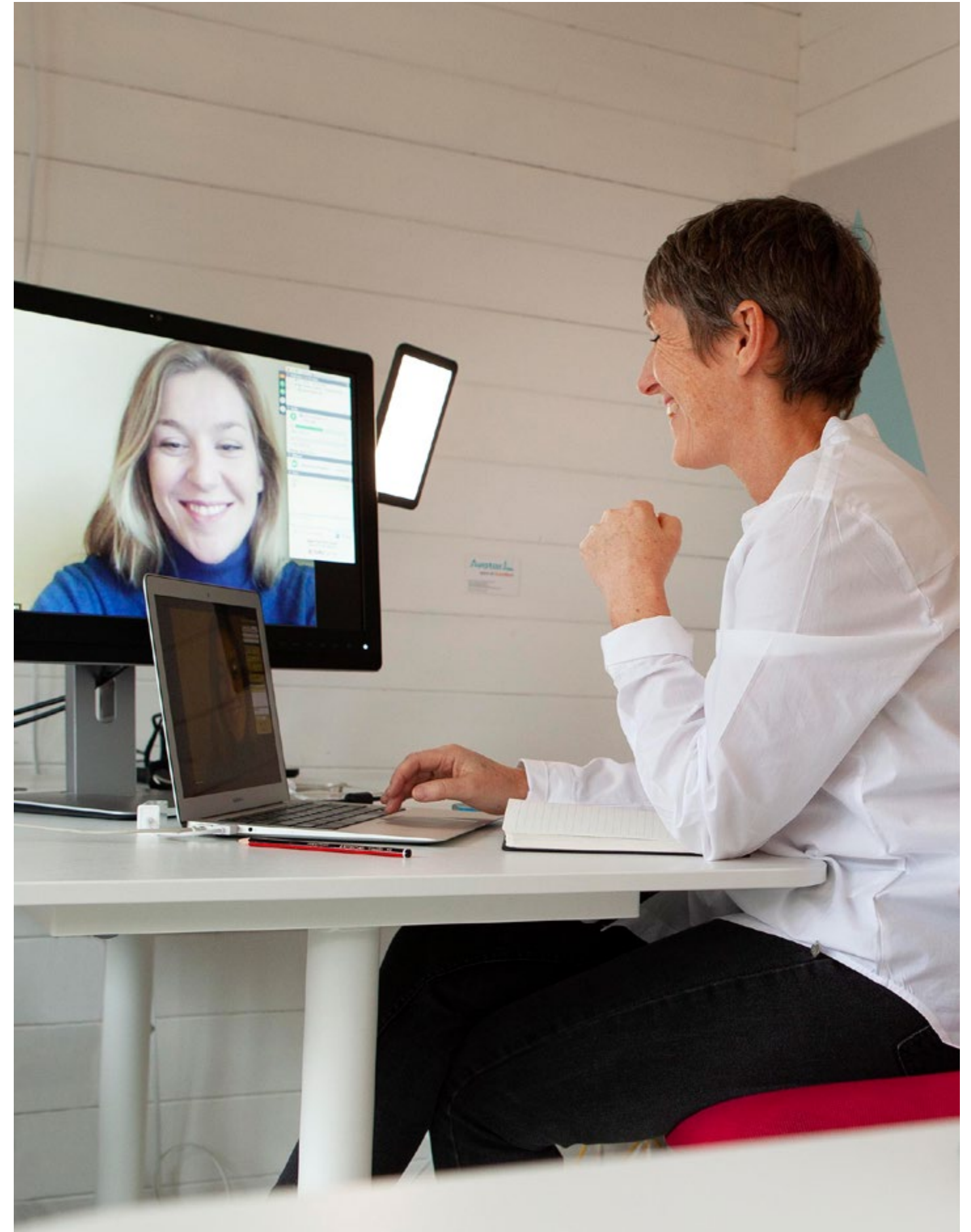
Among those supported by the project was Flann Microwave. Established over 60 years ago, Flann Microwave designs and manufactures high-precision satellite communication test equipment. Operating from a purpose-built facility on the outskirts of Bodmin, the company has built an international reputation for quality and innovation.

The Flann Microwave team was keen to ensure it was making the most of digital technologies to manage day-to-day running of the business, so Superfast Business Cornwall arranged for them to attend a Technology for Business Growth workshop. This was followed by a programme of 12 hours of support spread over a 12-week period. Angela Harvey, Head of Operations & Finance, said: “The

workshop was a fantastic way of focussing our thinking to develop a digital action plan – and we soon identified three priority areas.

“The first was a Shop Floor Data Capture system. Staff now have tablets on which they can record details of time spent on each job. It is amazing to see the difference this is making. The second area was to facilitate collaboration across the business. Moving our communication systems to the cloud means we can stay in touch wherever we are in the world! The third part was to replace our outdated time, attendance and HR processes. The cloud-based system is a real leap forward – it is fully integrated, eliminating a vast amount of paperwork. This combination will bring radical improvements to our efficiency and productivity.

“This has been a fantastic journey for our business and we are already reaping the benefits of this new approach. As a direct result of this project we have already created two new jobs and we expect to create further new jobs very soon.”



A photograph of offshore wind turbines in the ocean, overlaid with a teal color filter. The text 'Energy & Low Carbon' is written in white over the image.

Energy & Low Carbon

Supporting the shift
towards a low-carbon
economy.

Through funding in renewables and low-carbon initiatives, Cornwall is looking to increase its renewable energy production and meet its net-zero carbon ambition by 2030, whilst developing a thriving market in environmental technologies, goods and services. Over £60m from ERDF has been invested to improve energy efficiency, decentralise production, and encourage low-carbon strategies. From wave and wind power to granite-bound geothermal heat, Cornwall has a wealth of natural reserves to spark innovation.

ERDF funding

£64m

Pioneering the use of deep geothermal power

Launched in June 2017, this ambitious pilot project tested the technical and commercial viability of a deep geothermal power plant.



After many years of deep geothermal exploration in Cornwall at Rosemenowes Quarry by Camborne School of Mines, Geothermal Engineering Ltd (GEL) devised a novel concept to harness the naturally hot water stored deep under Cornwall. GEL secured funding from the European Regional Development Fund, Cornwall Council and private investment for the pioneering project at United Downs near Redruth in 2017, with the aim of demonstrating that power can be generated from the natural heat beneath our feet.

Cornwall has the highest geothermal gradient in the UK, which makes it the ideal place for deep geothermal projects. The naturally heat-producing granite that lies beneath most of Cornwall and the Isles of Scilly means that at a depth of around 5km the water temperature is circa 180c; hot enough to generate electricity at the surface, with the potential for the surplus

heat to be used commercially within a few kilometres of the power plant. Moreover, the deep fluid at United Downs has been found to have extremely high concentrations of lithium, an essential component of batteries and electric cars. Exploration to remove the lithium from geothermal fluid is in its infancy worldwide, but the project’s findings allows Cornwall to join the race to successfully extract and secure a national source of this critical raw material.

Once the site at United Downs had been cleared, levelled and groundworks carried out, two deep wells were drilled using a drilling rig designed for use in urban areas, to keep noise emissions to a minimum. The production well was drilled to a depth of just over 5km and will be used to bring the hot geothermal fluid to the surface, whereas the injection well is nearly 2.3km deep and will be used to deposit the cooled fluid back underground. This novel well design

“This is an incredibly exciting time for deep geothermal energy in the UK as we transition from oil and gas and tap into this huge renewable power resource.”

Ryan Law, Managing Director, GEL

works in conjunction with a highly fractured area of granite known as the Porthtowan Fault Zone, which allows fluid to move freely through the hot rock. The two wells were tested throughout 2020-2021 and on the 1st July 2021, the United Downs project proved that the concept worked when

hot geothermal fluid was successfully brought to the surface and generated steam, before being reinjected into the deep reservoir.

The final phase of the project will be the installation of a binary power plant which is due to be online in 2023. Within the plant, the hot geothermal fluid will be used to heat a secondary working fluid in a heat exchanger to produce steam, which will ultimately generate electricity for the national grid.

GEL believes that young people have a great deal to offer the renewable energy sector, which is why they are taking part in the government’s Build Back Better – Kick Start scheme, designed to take young people off long-term Universal Credit. Through this scheme, GEL has employed two young people with the opportunity now for a third to join the company in the coming months.

An integral part of the United Downs project has been community engagement, including an education

and careers programme for primary schools through to university level and a community grant fund. Many schools and colleges throughout Cornwall have benefitted from talks and events within the education programme, as well as many national universities. Engaging with the local community and parish councils has been fundamental to gaining support for this project. Communities have also benefitted from the community grant fund, which has been shared between 14 projects in the parishes of Gwennap, St Day, Carharrack and Lanner, enhancing community cohesion and helping reduce climate change through sustainable projects. Approximately 26 universities and research institutions across Europe have also been involved with the work carried out at United Downs, helping to build an understanding of the technical and social requirements for developing further deep geothermal projects across Cornwall and the UK.

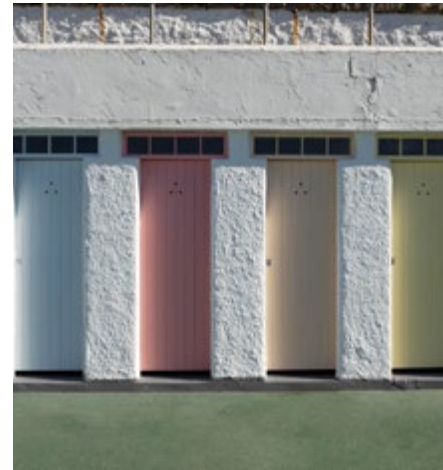
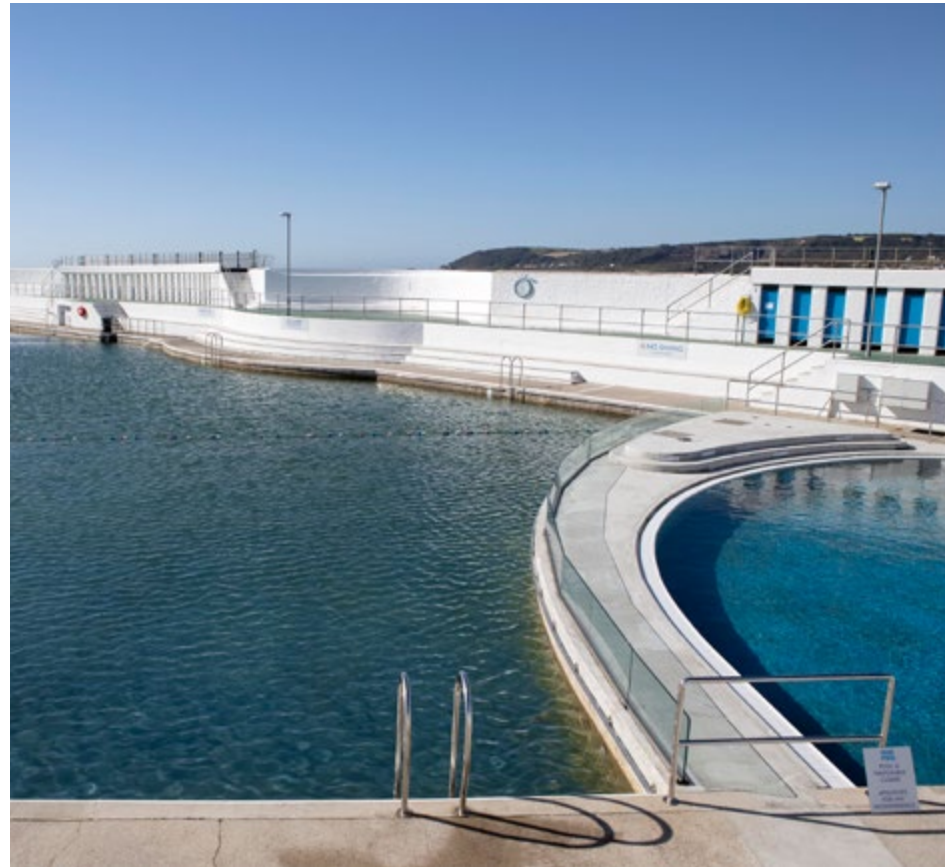
Wells drilled to

5272m

the UK’s deepest onshore hole

£1.5m

invested in the local economy



Local Energy Market

The groundbreaking Local Energy Market (LEM) trial created a flexible distribution network for renewable power.

This three-year project tested the role of flexible demand, generation and storage via a new virtual marketplace.

Highlights:

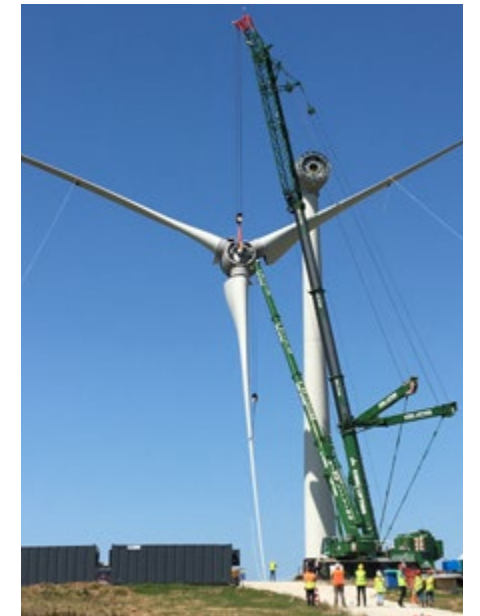
- New technology was installed in nearly 200 homes and businesses.
- The project led to Cornwall's first, smart grid-connected wind turbine.
- A 2.5-megawatt 'smart' solar farm, capable of powering up to 500 homes, was built on a disused mica tip.

An online virtual energy marketplace, created with partners N-Size, Western Power Distribution and National Grid ESO, allowed homes and businesses to adjust their energy demand or generation in response to the needs of the grid and receive payment for this service.

The trial was a success, proving that the market-based procurement of flexibility can form a valuable new tool in a low-carbon energy system.

What next?

The Cornwall LEM is paving the way for a smarter grid that is better able to accommodate renewable energy and reduce carbon emissions.



Jubilee Pool

400 CO₂e
tonnes annual
decrease in
greenhouse gases

Water heated to
35°C
in winter

Delivering geothermal heat to a section of the Jubilee Pool, this project demonstrates how renewable heat can be harnessed and its use replicated.

Jubilee Pool is one of the most notable outdoor lidos in the UK, set on the Penzance seafront. However, during the winter of 2014, the pool was desperately in need of refurbishment when massive storms caused devastation.

As the pool was restored and its operations devolved to the community, interested parties began to explore options for a more sustainable future. The seasonality of the pool was a considerable limitation, prompting discussions about using geothermal energy to heat a portion of the pool and allow it to run through the winter.

ERDF funding enabled Geothermal Engineering Limited to start drilling a geothermal well. The heated pool, which opened in September 2020, will be used to provide wellbeing mornings, health facilities for locals and wider activities to generate income.

What next?

It's hoped that the project will encourage the roll out of many similar geothermal heat projects – particularly to many local communities and buildings that are not connected to the gas grid – on a commercial basis.



Climate Change & Environment

Climate change adaptation, risk prevention and management.

ERDF has been supporting the enhancement and protection of natural environments through strategic funding interventions. Combining coast, countryside and urban communities, Cornwall encompasses a range of landscapes and habitats. Projects in this area have included flood risk reduction, biodiversity improvements, and environment-focused business support.

Flood resilience

£11m

Environment funding

£11m

Green Infrastructure for Growth

Transforming urban green spaces and enhancing local wildlife.

Though Cornwall is famed for the beauty of its natural environment, some open spaces in Cornish towns have previously been unattractive, inaccessible, and offering little in the way of wildlife and nature.

The Green Infrastructure for Growth (GI4G) project, funded by the European Union, Cornwall Council and the University of Exeter, is creating space for nature in environments such as urban parks, recreation grounds, roadside verges and closed churchyards.

Thirty urban green spaces in seven Cornish towns – Camborne, Redruth, Hayle, Penzance, Pool, Bude

“We want local people to celebrate and enjoy these local spaces and it’s been fantastic to be working with individual communities to help develop these plans.”

Karen Hall, Project Officer, GI4G



and Saltash – have been transformed with new wildflower meadows, wildlife ponds, trees and orchards, flowering pollinator shrubs, seating areas and even bug hotels.

“We know that the environment plays a key role in people’s health and happiness,” said Karen Hall, GI4G’s Project Officer. “However, there is increasing pressure on many green spaces in our towns, which is leading to the loss of wildlife. The aim of our project is to make green spaces that work for people and for nature.”

The project, which began in 2017, has seen 40 hectares of nature-rich habitat spaces – equivalent to 40 rugby pitches – created in the seven towns. The GI4G team has worked closely with local councillors and community groups to select the areas for improvement and to design the plans for enhancing the green spaces. It has also liaised with specialist organisations, including Disability Cornwall, to ensure that the new spaces for nature are accessible to everyone.

As well as planting new wildflower meadows, native trees and special pollinating shrubs to create wildlife havens for bees, butterflies, birds and hedgehogs, the team are also removing invasive species such as Japanese knotweed, invasive ivy and rye grass.



Areas improved

Hayle

Copperhouse Pool Margins, Treveglos Meadow and Millpond Gardens.

Pool

East Pool Park, Treloweth Park and Cremling Well. New trees have also been planted on Tolvaddon Road.

Bude

Goldsworthy Field, Berries Avenue, Crescent Car Park borders and Kings Hill Wood.

Camborne

Tuckingmill Valley Park, Wheal Harriet (Elim Centre) and Park an Tansys open space.

Saltash

Warfelton Field, Grenfell Estate, Saltmill Park, Chapel Field and Longstone Park.

Penzance

Bolitho Gardens, Millennium Woods, Love Lane Wildlife Garden, Mennaye Boating Lake, Mann’s Field and St Mary’s Churchyard.

Redruth

Treskerby Playing Field, Trenoweth Playing Field, Knights Way Field, Trefusis and St Day Road Cemetery.

Part of the project involves working with local communities to re-think their use of spaces so that they become community hubs. “As well as encouraging existing uses such as dog walking and sports, we want to see these spaces used for other activities,” said Karen. “This could anything from outdoor learning for schools, to natural gyms and exercise classes.

“We want local people to celebrate and enjoy these local spaces and it’s been fantastic to be working with individual communities to help develop these plans”

The project has received further funding from the ERDF through a second phase, known as Making Space for Nature. This started in September 2020 and is due to be completed by December 2022.

StARR

The St Austell Bay Resilient Regeneration (StARR) Project aims to reduce flood risk to communities in the St Austell Bay area.

This is a much-needed local project, as some areas of Par and St Blazey were experiencing flooding after extreme rainfall, a situation that will only worsen with the effects of climate change.

The project is made up of approximately 30 schemes within the Par River and Treffry canal catchments, with designs developed for natural flood management and urban infrastructure. StARR is also encouraging investment to make Par and St Blazey better places to work, live and play.

Highlights

- Construction of storm water storage ponds in multiple locations.
- Riverbank strengthening in Pontois Mill and St Andrews Road North.
- Extensive highway drainage improvements to improve flood resilience in the Par Lane area.
- Public engagement events and workshops, plus an online engagement area via Let's Talk Cornwall.

What next?

Designs and applications are underway for a number of further schemes, including rain gardens, flood resilience and water attenuation features.

600
homes & 120 business
better protected from
flooding

400
Olympic-sized
swimming pools
water storage goal



Tevi

The Environmental Growth for Business project, also known as Tevi, has been designed to help businesses reap the benefits of the circular economy by making better use of their resources.

Part-funded by the European Regional Development Fund and delivered through a partnership led by

the University of Exeter with Cornwall Council, Cornwall Wildlife Trust and Cornwall Development Company, Tevi helps businesses to improve their processes, save money and benefit Cornwall's natural environment. So far, Tevi has engaged with over 500 small and medium-sized businesses across Cornwall and the Isles of Scilly.

Dr Chris Mann (Bannamann CEO) says, "We were delighted that the Tevi team were so supportive of this unusual and ground-breaking project. We really want to make radical change and Tevi saw the potential of this study, not just for us but for the whole zero-carbon sustainable energy future".

Highlights:

- Tevi's network of sensors, cameras and communication gateways hosted by Cornish SMEs continuously gathers data about Cornwall's environment. The results feature on Tevi's bespoke online environmental intelligence hub (lagas.co.uk).
- Nancarrow Farm received a grant to invest in composters and maturation boxes, which is reducing landfill waste while producing organic soil nutrients.
- Bannamann Ltd received funding to help with a feasibility study of potential biomethane options using grass cut at Cornwall Airport Newquay.

"It's not easy for businesses to find the time, investment or partners needed to improve processes and Tevi is designed to help overcome those challenges and make positive changes."

Ben Rowsell, Manager at Tevi

Communities

Supporting local economies within Cornwall and the Isles of Scilly.

Whilst rich in natural capital and alive with opportunities, Cornwall is also home to many deprived communities and displays persistent geographic imbalances. To address inequality, targeted funding through the Community-Led Local Development Programme is enhancing the economic health and development of these communities, through renovation and refurbishment, supported enterprises and skills growth.

Situated 28 miles from the coast of Cornwall, the Isles of Scilly is another area which has been benefitting from targeted investment. From flood protection and low carbon, self-sufficient energy and transport initiatives to business grants, ERDF investment has been channelled into supporting local projects and communities on the islands.

Community-Led Local Development

Community-Led Local Development (CLLD) is working in target areas of Cornwall, creating opportunities and investing in projects that make a difference to the local economy.

As a firmly community-focused initiative, CLLD ensures that the people rooted within communities are involved in developing projects. It works with local people to address local challenges,

design and deliver projects that contribute to increased employment, develop businesses, and improve opportunities to enhance local life.

This is delivered through four Local Action Groups (LAGs) made up of residents, community representatives, and public, private and voluntary organisations who understand and represent their neighbourhoods. Each

LAG has an individual strategy, which is built on the needs of its geographical area and sets out a range of key priorities.

LAGs are supported by a central team, which advises and guides applicants through the application process, whether they're a sole trader, small business or larger organisation.

"CLLD is such a great programme and 100% worthwhile; I have been able to get amazing marketing assets to make sure that the launch of my second collection is a success and I have already secured a feature in OK magazine and Cosmopolitan!"

Samantha Thomas, Tide and Seek

"This grant funding has helped us keep valuable members of our team in jobs, as well as increasing our customer reach throughout the lockdown period."

Kate Gough, Baker Tom's

"We've have had such a positive and supportive experience, and it's easy to ask CLLD when we're unsure about something."

Trisangma Watson, Foundation of Buddhist Thought

2
Bude

2
Launceston

1
Across Atlantic & Moor

3
Bodmin

14
Newquay

1
St Columb

2
Victoria

1
St Blazey

5
St Austell

1
Looe

2
Liskeard

2
Torpoint

1
Across Coast to Coast

3
St Just

8
St Ives

5
Hayle

5
Camborne

9
Redruth

1
St Day

16
Truro

4
Penryn

1
Falmouth

14
Long Rock

2
Penzance & Newlyn

5
Helston & Porthleven

2
Across South & East Cornwall

"We went from a small start-up facing a global pandemic to a well-equipped film studio delivering its first BBC One documentary, all thanks to CLLD's help."

Ed Smit, Carrick Roads Studios

"Since working with CLLD sales of my small business start-up have doubled. My business is thriving, reaching more customers, and gaining credibility."

Sarah Cudmore, Homegrown Learning

1
Across all 4 LAG areas

2
Across West Cornwall

Creating a sustainable island economy

The Voucher Scheme programme on the Isles of Scilly is an investment fund that allows businesses on the islands to access financial support from £1,000 to £100,000.

Kirsty Graham, Engagement Officer from the Voucher Scheme, says: "The aim of the scheme is really to facilitate long-term, sustainable growth on the islands and to help people running businesses access the investment they need in order to be able to achieve that. We want businesses to be able to realise their growth ambitions and to create more jobs to help create a sustainable economy for the Isles of Scilly."

One of the businesses to access support from the scheme is start-up enterprise, SC Dogs Distillery. Based on St. Martin's, the Walder family has run Carron Farm for almost 70 years, initially growing scented narcissi on their Duchy of Cornwall farm tenancy.

Under the tender of the second generation, led by Stephen Walder, the farm has supplied milk, beef, fish and shellfish to the islands and more recently developed a facility that allowed them to harvest, produce and supply sea salt, branded SC Salt.

Stephen Walder says: "We initially applied to the RDPE Growth Fund

for funding to help us repurpose the outbuildings on the farm so that they were suitable and also to buy the distillery equipment we needed. Once we'd actually started to develop our rum we applied to the Voucher Scheme for support with our marketing, online and social media presence."

He adds: "There are so many opportunities for us to collaborate with and support other businesses across the islands. We've already spoken about working with apple farmers on St Mary's to make brandy, local chocolate and ice-cream producers on St Agnes, and fudge producers on Bryher. We also have exciting plans to create premium Rhum Agricole bottles with a local potter, bottle neck chains with a jeweller on St Martin's and even canvas bottle bags with a sailmaker on the islands."

The Voucher Scheme on the Isles of Scilly is run by the Isles of Scilly Council and in the first phase of the programme supported 49 start-ups and existing businesses with investment totalling £2,250,000. Following the success of phase one of the project, the scheme was granted an extension until December 2021 and a further £1.3 million made available.



"There are so many opportunities for us to collaborate with and support other businesses across the islands."

Stephen Walder, SC Salt

Smart Energy Islands

In 2015, an island-wide partnership was established with the aim to make Scilly fit for the future - self-sufficient, resilient and low-carbon.

It started with Smart Energy Islands, a £10.8m project that uses technology, including Hitachi's Internet of Things (IoT) platform and Artificial Intelligence (AI), to reduce the carbon footprint of the island whilst optimising locally produced, renewable energy. Around 400kW of solar panels were installed on the roofs of 70 of the council's homes and public buildings. Homes are also piloting energy technologies, such as batteries and air source heat pumps. Hitachi's platform will manage and optimise energy use around the house, linking it to the wider electricity grid.

With funding from ERDF and the Government's Local Growth Fund, the GO-EV electric vehicle project is now following. Led by the Council of the Isles of Scilly with partners Hitachi Europe Ltd. and the Isles of Scilly Community Venture CIC, this project has seen the installation of 33 charging points across all five inhabited islands on Scilly, together with the set up of a car share scheme with 10 electric vans and cars. The charge points have been integrated with over 50kW of solar panels and the optimisation of charging is being implemented to make best use of local solar power. Vehicle-to-grid technology is also a core part of the project, allowing the car share vehicles to be integrated with the electricity grid on Scilly.



What's next

During the Growth Programme (2014-2020), ERDF investments have worked tirelessly towards transforming the economy of Cornwall and the Isles of Scilly. As the journey carries on, many projects will continue to deliver their activities right up until the end of 2023, with results felt well beyond the end of this programme.

Innovation

Centre for Space Technologies

The Centre for Space Technologies (CST) will be home to Spaceport Cornwall's satellite integration facility, a hangar-like building that will take satellites in at one end, encapsulate them into the rocket fairing, and progress them to the other end, ready for launch.

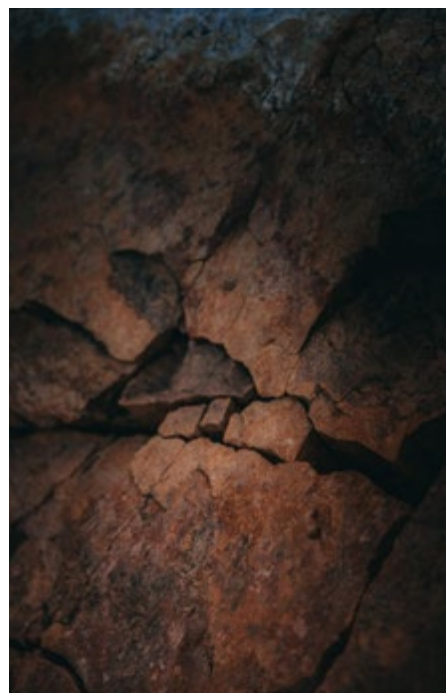
The CST will also be home to a Space Operations Centre and Launch Operations Centre, which will bring academia, small businesses and large businesses together in one place. It will offer businesses year-round office, laboratory, and R&D workspace in a collaborative environment, where cutting-edge ideas can be developed and shared.

The knowledge gained during the R&D of the products and services delivered within the CST will be used to solve some of the UK's most challenging issues, including climate change, improving environmental and social sustainability, ultimately accelerating the development of the space cluster here in Cornwall.



Deep Digital Cornwall

Deep Digital Cornwall is a world-leading research, development and innovation project for small and medium enterprises exploring digital technologies connected to the underground environment. The project will give businesses access to research skills, knowledge, data and facilities to carry out digital research and development of innovative products and services in sectors related to the underground environment and its connections to the surface. The project is creating a new Deep Digital Cornwall Hub on the Penryn university campus.



Workspaces

The Penzance Creative Cluster

The Penzance Creative Cluster project is constructing high-quality workspace for businesses in the creative sector. Located at Causewayhead in Penzance, it will provide more than 1,500m² of studio units and tenancies for a range of creative businesses.



Energy & Low Carbon

Cornwall FLOW Accelerator

Delivered by Wave Hub Development Service, the pioneering Floating Offshore Wind Accelerator project (FLOW) is set to transform the region into a world leader in floating offshore, by spearheading the industrialisation of floating offshore wind in the South West of England. It will capitalise on the UK Government's announcement in October 2020 of the UK's ambition to become a world leader in floating offshore wind.

Floating offshore wind (FLOW) is a huge opportunity for Cornwall and has the potential to create thousands of new jobs and deliver 10GW of Britain's target of 50GW of offshore wind capacity by 2050. FLOW can deliver renewable energy at unprecedented scale and with unprecedented speed.

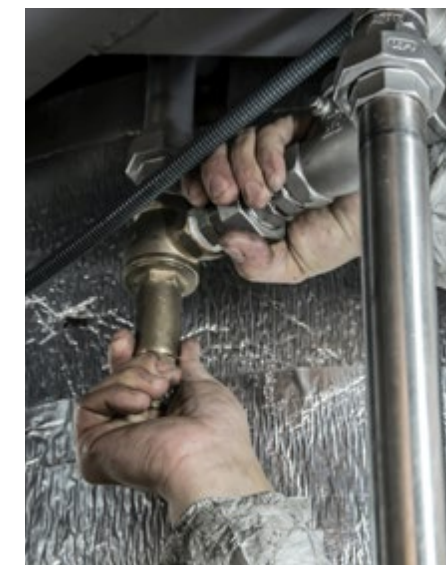


Heat the Street

Led by Kensa Utilities, the Heat the Street project will deliver a low carbon, village-wide heating system using seawater as the heat source.

A heat pump, hot water cylinder and new/modified heat distribution system will be installed at over 500 domestic and commercial properties in the village of Stithians. These heat pumps will be connected to a 'heat main' running below the street network, which contains fluid warmed by seawater using large heat exchangers located in a building adjacent to the harbour.

The benefit will be significantly lower heating costs and carbon emissions than present systems such as oil boilers and night storage heaters.



Transport

Drive EV2

The drive EV2 project is extending the deployment of electric vehicle charge points through Cornwall and the Isles of Scilly. It is enabling the transition to more efficient Ultra Low Emission Vehicles (ULEVs) by deploying a minimum of 150 fast/rapid EV charge point units.



Integration with the European Social Fund



A quarter of the Growth Programme allocation was funded by the European Social Fund (ESF) to complement the ERDF investment in business and infrastructure. During the programme, 66 projects have been part funded by ESF, with a number being co-financed by the Department for Work and Pensions, the Education and Skills Funding Agency and the Heritage Lottery Fund. These projects have been delivered by a host of partner organisations, including our Further Education colleges, the private sector and many voluntary and community sector organisations.

Working hand in hand, often through wide and complex partnerships, these organisations have striven tirelessly to help residents of Cornwall help themselves, improve their lives and attain fairer living standards. Thanks to ESF funding, thousands of participants all across Cornwall and the Isles of Scilly have overcome challenging barriers, gained new skills, taken up new opportunities and successfully accessed training, education and work.

"We are now running enamelling taster sessions for visitors, diversifying our income avenues."

Ben and Lucy Gerrard,
Silver Sapling



A number of organisations have taken advantage of the European Union's cohesion policy, using both ERDF and ESF to deliver integrated programmes such as Community-Led Local Development, Growth and Skills Hub and Cultivator.

Cultivator is an innovative programme being rolled out by Redruth-based organisation Creative Kernow, which secured funding from both the ESF and ERDF.

Since the project delivery started in January 2017, over 800 creative businesses have benefitted. Cultivator Director Jane Sutherland explained, "Cultivator is an innovative project providing tailored support from pre-start individuals through to established SMEs. The fact that the ERDF-funded business support programme is directly aligned to the skills programme, which is supported by ESF funding, results in a uniquely integrated programme of skills and business development for the Creative Industries sector in Cornwall and the Isles of Scilly."

Silver Sapling is a hand-made jewellery business based on St Mary's in the Isles of Scilly, and is one of the businesses that have benefitted from support to develop their skills. Silver Sapling owners Ben and Lucy Gerrard said, "The grant has enabled us to come to St Austell College to attend an enamelling course, leading us to expand our silver jewellery collection. During the visiting season, we are now running enamelling taster sessions for visitors, diversifying our income avenues."

Cultivator Skills has also supported the placement of over 50 interns and helped businesses in taking on apprentices ranging from one to two years in placement.

Textile designer and print maker Helen Round, based in Mount Edgcumbe, employed two new full-time apprentices and one intern after engaging with the programme. Helen explained, "This is a real cold spot of Cornwall and finding employment here in the creative industries can be difficult for young people. I feel very proud that we have been able to do that through Cultivator."



Complementing the skills development support, Cultivator also offers targeted investment to help businesses build capacity. Over 300 creative industry businesses have received grants as part of the ERDF-funded business support. Following a meeting with her creative business advisor, Helen Round decided to bid for a grant to invest in the purchase of new equipment. She says, "The tunnel dryer helped us enormously – production is now three times quicker, which means we can take up larger orders from inland and overseas."

Jane Sutherland added, "Cultivator has generated amazing benefits for SME creative industries businesses across Cornwall and the Isles of Scilly. Working with teams from our four delivery partners; the University of Plymouth, Real Ideas Organisation, Cornwall College and Business West, also makes it a very collaborative project."



ERDF beneficiaries list

Over a hundred projects have been part funded by the European Regional Development Fund during the ESIF Growth Programme 2014-2020 across Cornwall and the Isles of Scilly. Thank you to all the partners who have made those projects possible.

Cornwall Council
Cornwall and Isles of Scilly Integrated Territorial Investment Support Team
Council of the Isles of Scilly
Isles of Scilly Strategic Technical Assistance Team IoSTAT (05R15P00031)
Cornwall Development Company Ltd
AMLAG – CLLD Preparatory Support ERDF
Cornwall Development Company Ltd
C2CLAG – CLLD Preparatory Support ERDF
Cornwall Development Company Ltd
WCLAG – CLLD Preparatory Support ERDF
Cornwall Development Company Ltd
SELAG – CLLD Preparatory Support ERDF
Cornwall Council
Carluddon Technology Park Project
Oxford Innovation Services Ltd
Cornwall & Isles of Scilly Business Start Up
Oxford Innovation Services Ltd
Coaching for Growth (C4G)

Council of the Isles of Scilly
Isles of Scilly Voucher Scheme
Cornwall Development Company Ltd
Cornwall & Isles of Scilly Growth Hub
Cornwall Development Company Ltd
Invest in Cornwall
Cornwall Development Company Ltd
Business Investment for Growth II
SWMAS Ltd
Cornish High Value Manufacturing Investment Programme
Serco Regional Services Ltd
Superfast Business – Cornwall & Isles of Scilly
YTKO Ltd
Outset Cornwall
Highways England
A30 Carland Cross to Chiverton Cross (Development Phase)
Cornwall Council
St Erth Multi Modal Hub
Cornwall Marine Network
Propel
Oxford Innovation Services Ltd
Financial Readiness Project
Creative Kernow Ltd
Cultivator (Business Support)
Geothermal Engineering Ltd
Jubilee Pool Geothermal Heat Project
University of Plymouth
Acceleration Through Innovation (AtI)
The Cornwall College Group
Unlocking Innovation Potential (UIP)
Hitachi Europe Ltd
Smart Energy Islands
PRP Architects
Cornwall New Energy
University of Exeter
SMARTLINE: Smart technology, linking innovation & needs for eWellbeing in communities
Centrica plc
Cornwall & Isles of Scilly Local Energy Market (the LEM project)

Falmouth Developments Ltd
Church View Business Park
CETO Wave Energy UK Ltd
CETO 6 Wave Hub Project
Wave Hub Limited
Wave Hub Offshore Cable Extensions
Cornwall Development Company Ltd
AeroSpace Cornwall
Duchy College (part of the Cornwall College Group)
Agri-Tech Cornwall
CFT Group Limited
Debit escrows and smart contracts in FinTech
Council of the Isles of Scilly
Adaptive Scillies IoS Coastal Resilience & Adaptive (water) Action Plan
University of Exeter
Marine-i
University of Plymouth
E-health Productivity & Innovation Cornwall & Isles of Scilly (EPIC)
Cornwall Council
Long Rock Strategic Coastal Improvements
Cornwall Council
St Austell Resilient Regeneration
Thalamus Health Ltd
Diagnosticap™ - Phase 1
Falmouth University
Launchpad
Cornwall Council
Superfast 2
Avanti Communications Ltd
Superfast Satellite Terminals
Cornwall Council
Aerohub Business Park Phase 1
Geothermal Engineering Ltd
United Downs Deep Geothermal Power (UDDGP)
A30 Business Park Ltd
A30 Business Park Phase 1
Cockwells Modern & Classic Boatbuilding Ltd
Cockwells Site Development

Keynvor MorLift Limited (KML)	Oxford Innovation Services Ltd	The Cornwall College Group (TCCG)
Falmouth Wharves - Marine Hub	Transform2	Future Focus 2
JAD Developments (Redruth) Ltd	Cornwall Council	University of Plymouth
Redruth Enterprise Park (formerly CBP West Phase 1)	Pool Innovation Centre 2 - Grow On Space	Acceleration Through Innovation 2 (ATI2)
University of Exeter	Krowji Ltd	Creative England Ltd
Environmental Growth for Business (05R16P00892)	Krowji Phase 2	Creative Growth Programme
Westcountry Rivers Trust	Cornwall College	Creative Kernow Ltd
Water for Growth (W4G)	Breakthrough2	Cultivator Business Support Phase 2
Cornwall Council	Falmouth University	SWMAS Ltd
Green Infrastructure for Growth	Launchpad Outreach Pilot	Cornwall & Isles of Scilly Manufacturing Advisory Programme (CMAP)
Cornwall and Isles of Scilly Investments Limited	Business West	Cornwall Council
Cornwall and Isles of Scilly Investment Fund (“CloSIF”) (1)	Cornwall & Isles of Scilly Trade Forum	Penzance Creative Cluster
Cornwall and Isles of Scilly Investments Limited	YTKO LTD	Cornwall Council
Cornwall and Isles of Scilly Investment Fund (“CloSIF”) (3)	Outset Cornwall 4	Liskeard Cattle Market Digital & Creative Workspace
Cornwall Development Company Ltd	Cornwall Development Company	Cornwall Council
Cornwall CLLD (ERDF)	BIG Productivity	Hayle Marine Renewables Business Park (MRBP) Phase 2
Cornwall Council	Cornwall Development Company Ltd (CDC)	Kensa Utilities Ltd (KUL)
Cornwall Rail Mainline Signal Enhancement	Invest In Cornwall Phase 2	Heat the Street
Hall for Cornwall Property Trust	Cornwall Council	Porthleven Harbour and Dock Company
Hall for Cornwall Property Trust Capital Project - QuayWorks	Green Infrastructure for Growth 2 (GI4G2)	The Innovation Studio
Age UK Cornwall & the Isles of Scilly	Natural England	Highways England
Sustainable Transport in Cornwall	Growing Goss	A30 Carland Cross to Chiverton Cross (Construction Phase)
Council of the Isles of Scilly	University of Plymouth	Cornwall Council
IOS GO EV SMART	E-Health Productivity & Innovation in Cornwall (EPIC2)	St Agnes to Threemilestone Saints Trail
Penzance Heliport Ltd	Cornwall Development Company	Eden Geothermal Limited
PZ Heliport Multi Modal Hub	AeroSpace Cornwall – Phase 2	Eden Geothermal
Bennamann Ltd.	University of Exeter	Cornwall Development Company Ltd
Energy Independent Farming	Marine-innovation 2: Coordinated support for Marine technology RD&I (MI 2)	CPGH CIOS Growth Hub (Phase 2) (Parent 05R17P02255)
University of Exeter	University of Exeter	Cornwall Council
The Inclusivity Project	Smartline Extension	Truro Loops
Cornwall College	University of Exeter	Cornwall Council
Digital Transformation	Deep Digital Cornwall	Centre for Space Technologies
Council of the Isles of Scilly	Pure Energy Professional Limited (PEP)	Wave Hub Development Services Limited
Isles of Scilly Voucher Scheme Extension	C&IoS Marine Hydrogen-Electric Propulsion Centre of Excellence	Cornwall FLOW Accelerator
Cornwall Development Company Ltd	Cornwall Council	Bennamann Energy Ltd
CIOS Growth Hub (Phase 2)	Superfast 3 – Inclusive Growth	Off-Grid Rural EV Charger with Bioheat
Cornwall Council	Falmouth University	Cornwall Council
Cornwall and Isles of Scilly Technical Assistance - Intermediate Body ERDF	Immersive Business	DRIVE EV2



www.cornwallislesofscillygrowthprogramme.org.uk